



SafetyLink®

*Innovative
Fall Protection*

2018/19 ANCHORS & LIFELINE CATALOGUE

‘Innovative Fall Protection’

SafetyLink is a global leader in designing unique energy absorbing height safety systems.

SafetyLink’s team provide clients with comprehensive training, data and technical information delivering protection to workers in a multitude of scenarios.



SafetyLink Webinar
Online Training Link

About





HEIGHT SAFETY PERMANENT ROOF ANCHORS AND HORIZONTAL LIFELINE SYSTEMS

An Australian company established in 1998, SafetyLink is fast becoming a global leader in design, manufacture and distribution of quality height safety systems. Recognised for pioneering the first energy absorbing anchor point, this same technology has been integrated into the Frog range of products.

All anchor points, lifelines and ladder systems manufactured by SafetyLink are extensively tested to meet and exceed industry standards. Tests are conducted by accredited facilities in a multitude of scenarios ensuring that our height safety systems can be relied upon beyond the test laboratory. We test to European Standards EN795, CEN/TS16415, Australian Standards AS/NZS 1891.4, 5532 and USA Standards OSHA/ANSI 1926.502, Z359.7.

SafetyLink

Working at heights is something SafetyLink takes seriously, with comprehensive installation instructions, online training and mobile applications all supported with an experienced technical team. Our online platform enables easy access to our learning management system, product information and lifeline system builds all in the one place.

- Supply a large range of height safety systems that protect workers from the ground up.
- All products tested and manufactured to current Standards.
- Access to online training modules 24/7.
- Supply of installation guides and product data sheets.
- Assisted system design layout and advice.
- Extensive technical support with collectively over 100 years of experience in the height safety industry.

Visit us at www.safetylink.com for the latest training, height safety resources and fall protection products.

Contents

ANCHORS 6

| | |
|-------------------------|----|
| FrogLink Anchors | 8 |
| TileLink Anchors | 10 |
| Steel Purlin Anchors | 12 |
| Concrete Anchors | 14 |
| Rafter Mounted Anchors | 18 |
| Surface Mounted Anchors | 20 |
| Eyebolt / Eyebolt | 24 |
| Temporary Anchor | 26 |

LIFELINES 28

| | |
|------------------------------------|----|
| Surface Mounted Frogline | 30 |
| Standing Seam Mounted Frogline | 34 |
| Purlin Mounted Retro Frogline | 36 |
| Concrete Mounted Frogline | 38 |
| Steel Mounted Frogline | 40 |
| Concrete Wall Mounted Frogline | 42 |
| Steel Wall Mounted Frogline | 44 |
| Concrete Mounted Overhead Frogline | 46 |
| Steel Mounted Overhead Frogline | 48 |

SHUTTLES/FITTINGS 50

| | |
|--------------------|----|
| Lifeline Terminals | 52 |
| Lifeline Shuttles | 54 |

ROOF ACCESS 56

| | |
|------------------------|----|
| Ladder Access Brackets | 58 |
| Entry Access | 60 |

TOOLS 62

| | |
|------------------------|----|
| Rivet Tools | 64 |
| Crimping Tools | 66 |
| Hydrajaws Pull Testers | 68 |

‘Innovative Fall Protection’

*Energy Absorbing Anchors
keeping you safe whilst
working at heights*



Anchor Installation Handbook

ANCHOR POINT

SafetyLink's dedicated design team have been working continuously creating a multitude of new anchors to suit any working at heights scenario.

SafetyLink supply height safety equipment to all industries including industrial, commercial and domestic sites.

From a series of anchor points to a complete network of systems for maintenance, access and inspections, SafetyLink has you covered.

All SafetyLink products undergo extensive testing in a multitude of scenarios by accredited testing facilities.

SafetyLink's experienced technical team is complemented with comprehensive installation manuals and testing certificates.



Anchors

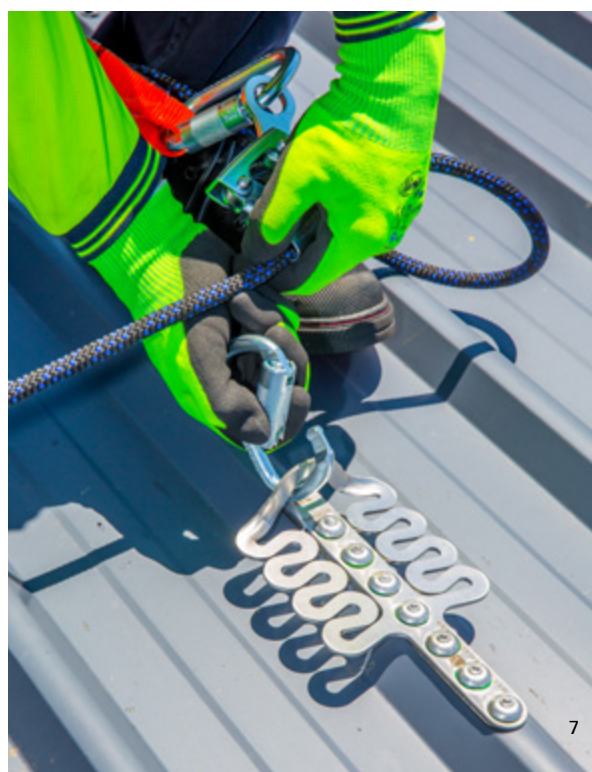
SafetyLink will provide you with the following:

- Supply a large range of anchor points that protect workers from the ground up.
- All products tested and manufactured to current Standards.
- Access to online training modules 24/7.
- Supply of installation guides and product data sheets.
- Assisted system design, layout and advice.
- Extensive technical support with collectively over 100 years of experience in the height safety industry.

Benefits of choosing SafetyLink:

SafetyLink's roof anchor point designs incorporate the same stand out feature of all our roof anchors maximising energy absorption. This dynamic design reduces the load back onto the structure and the worker attached to the roof anchor.

A fall is never an anticipated event when working at heights, therefore the direction of your fall cannot be accurately predicted. All SafetyLink roof anchors are designed and tested as multi-directional.



SURFACE MOUNTED ANCHORS



ANCHORS

SafetyLink provides a comprehensive online platform that enables you to participate in installation training, access product information and compile your certificate information in the one place.

The structure must be assessed by an engineer, unless it is clear to a competent person that the structure is adequate.



Installation Video

- This revolutionary all in one unit has been designed to attach to all metal profiles with a single row of attachment holes. This unique configuration makes it a fast simple unit for installation.
- Its low profile reflective design is a plus for many commercial or residential enterprises wanting to maintain an aesthetically pleasing facade.
- Dynamic design reduces the load back onto the structure and person attached to the anchor.

| Product Code | Description | Weight (kg) |
|------------------------------|--|-------------|
| FROGL001 | FrogLink Anchor | 0.291 |
| FROGL001+Rivets | FrogLink Anchor with 7 Aluminium Rivets | 0.340 |
| FROGL001+S5Z | FrogLink Unit + S5_Z Brackets | 0.725 |
| FROGL001+STROP_swaged | FrogLink Anchor, 1.2m Strop swaged, Strop Hook, Tag | 0.779 |
| FROGLINK+STROP+RIVETS_swaged | FrogLink Anchor, 1.2m Strop swaged, Strop Hook, Tag and Rivets | 0.828 |





FrogLink Anchor with Rivets

FALL ARREST



- FrogLink is a surface mounted height safety anchor point for use on **metal roof profiles** where access to building structure is difficult.
- 360° Multi-directional, enabling full rotation around the anchor.
- Install using 7 x 8mm Rivets (Drill Size 7.8-8.2mm Aluminium).

PRODUCT CODE: FROGL001+RIVETS

| Components | Description | Material | Qty |
|-----------------|-----------------|-----------|-----|
| FROGL001 | FrogLink Anchor | 316SS | 1 |
| RIVET_8mm(27.7) | Rivet: 8mm | Aluminium | 7 |

FrogLink Anchor with S5_Z Brackets

FALL ARREST



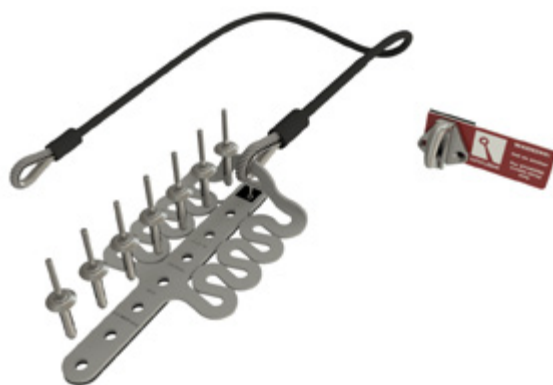
- FrogLink is a surface mounted height safety anchor point for use on **standing seam roof profiles** where access to building structure is difficult.
- 360° Multi-directional, enabling full rotation around the anchor.
- Install using 2 x S5_Z Clamps, *please advise standing seam roof sheeting profile.*

PRODUCT CODE: FROGL001+S5_Z

| Components | Description | Material | Qty |
|--------------|--------------------|----------|-----|
| FROGL001 | FrogLink Anchor | 316SS | 1 |
| S5_Z_BRACKET | S5 Z Clamp Bracket | Alum/SS | 2 |

FrogLink Anchor with First Man up Strop

FALL ARREST



- FrogLink anchor with swaged Strop, to be used as a first man up system.
- 360° Multi-directional, enabling full rotation around the anchor.
- Attachment end should be secured with a strop hook when not in use to ensure it can be accessed from a safe area for next use.
- Install using 7 x 8mm Rivets (Drill Size 7.8-8.2mm Aluminium).

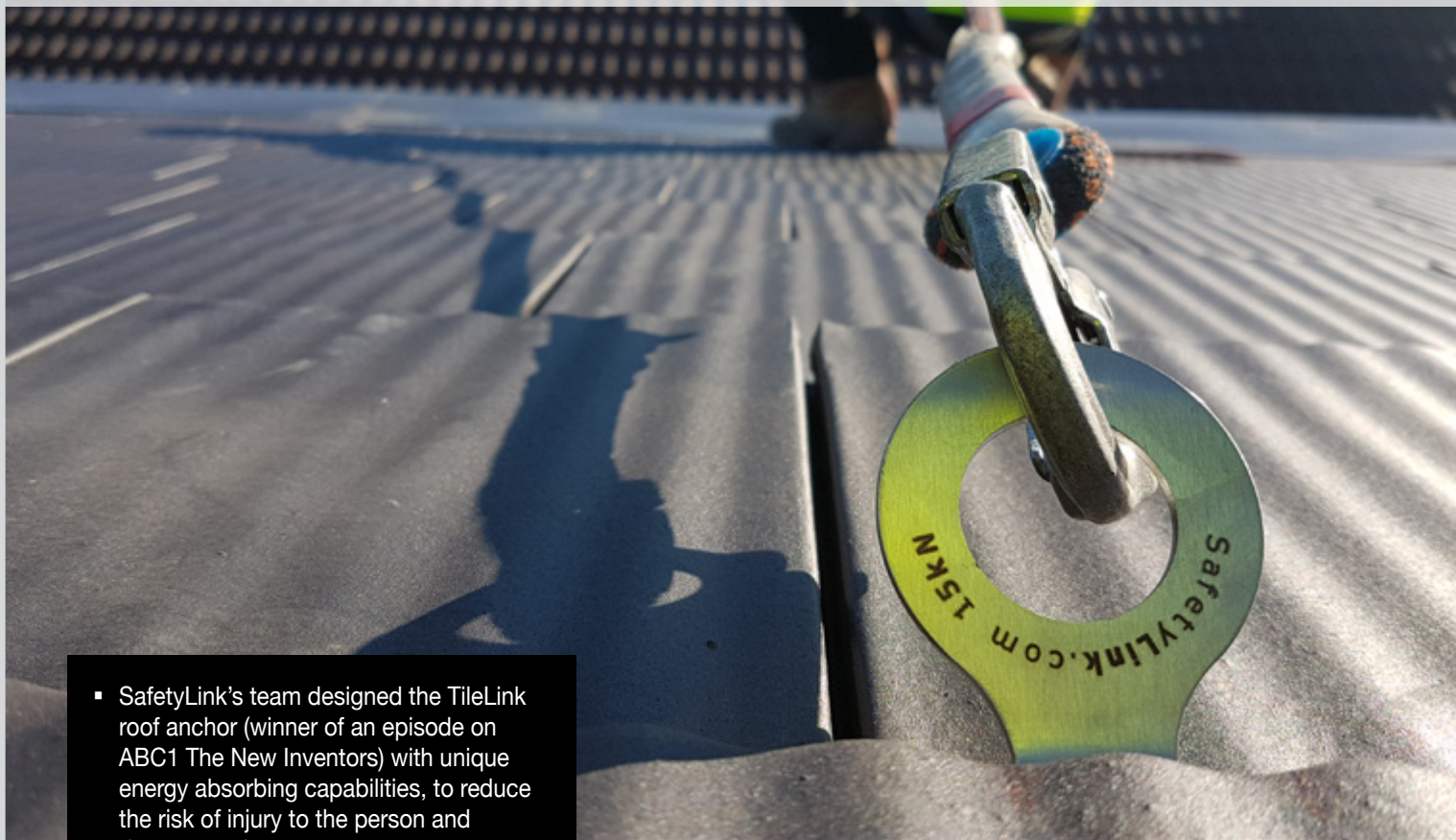
PRODUCT CODE: FROGLINK+STROP+RIVETS_swaged

| Components | Description | Material | Qty |
|-------------------|--------------------------|-----------|-----|
| FROGL001 | FrogLink Anchor | 316SS | 1 |
| STROP 1.2m_swaged | 1.2m Strop | 316SS/PVC | 1 |
| STROPHOOK | Spring Fender Hook | 316SS | 1 |
| STROPHOOK_TAG | Strop Hook Warning Label | Plastic | 1 |
| RIVET_8mm(27.7) | Rivet: 8mm | Aluminium | 7 |

Tools Required for Installation

| | | |
|--------------|--|-----------------|
| GESIPA001.01 | Gesipa Powerbird BT Cordless Rivet Tool (includes extra battery) | Details Page 65 |
| GESIPA001.02 | Gesipa Hand Rivet Tool (HN 2) | Details Page 65 |

RAFTER MOUNTED ANCHORS



- SafetyLink's team designed the TileLink roof anchor (winner of an episode on ABC1 The New Inventors) with unique energy absorbing capabilities, to reduce the risk of injury to the person and damage to the structure.
- The TileLink is quick to install, with amazing performance ability. The unique design is practically invisible when looking at the roof.
- The TileLink fits between the existing tiles ensuring no waterproofing issues. There is no need to cut the sarking as the design of this unique roof anchor, eliminates any future potential roof leaks.

ANCHORS

SafetyLink provides a comprehensive online platform that enables you to participate in installation training, access product information and compile your certificate information in the one place.

The structure must be assessed by an engineer, unless it is clear to a competent person that the structure is adequate.



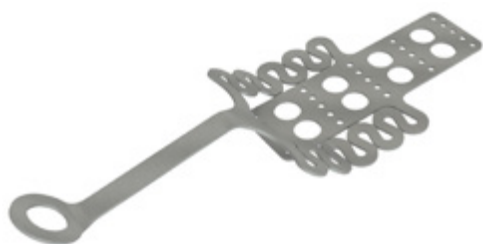
Installation Video

| Product Code | Description | Weight (kg) |
|----------------------|--|-------------|
| TILEL001 | TileLink Timber Rafter Mounted Anchor | 0.634 |
| TILEL001+SCREWS | TileLink Timber Rafter Mounted Anchor + 5 Screws | 0.679 |
| TILEL001_SFMM | TileLink Steel Frame Mounted Anchor | 0.630 |
| TILEL001_SFMM+RIVETS | TileLink Steel Frame Mounted Anchor + 5 Aluminium Rivets | 0.665 |



TileLink Anchor (Timber Rafters)

FALL ARREST



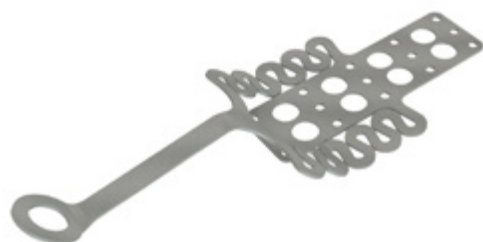
- TileLink anchor point designed for use on **timber rafters** with tiled roof.
- 360° Multi-directional, enabling full rotation around the anchor.
- Five fixing points with five (5) alternate fixing rows to suit multitude of tile roof profiles.
- Install using 5 x 12 gauge (50mm) roofing screws.
- Eyelet 30mm ID.

PRODUCT CODE: TILEL001+SCREWS

| Components | Description | Material | Qty |
|---------------|--------------------------------|----------|-----|
| TILEL001 | TileLink Anchor | 316SS | 1 |
| SCREW 12x50mm | 12 gauge x 50mm Hex Head Screw | Coated | 5 |

TileLink SFM Anchor (Steel Rafters)

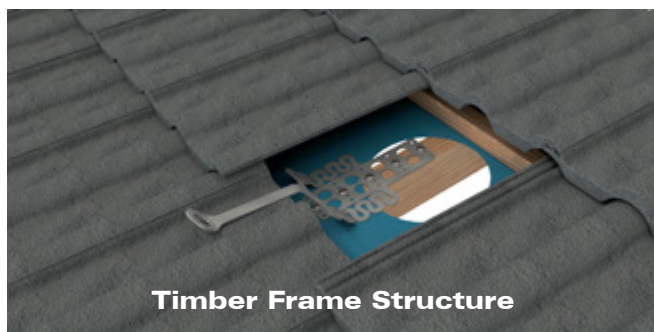
FALL ARREST



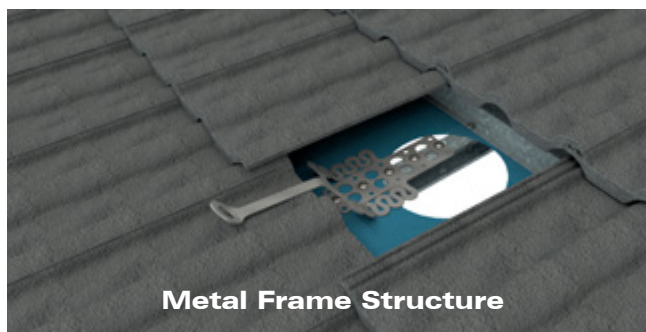
- TileLink anchor point designed for use on **steel rafters** with tiled roof.
- 360° Multi-directional, enabling full rotation around the anchor.
- Five fixing points with three (3) alternate fixing rows to suit multitude of tile roof profiles.
- Install using 5 x 8mm Rivets (Drill Size 7.8-8.2mm Aluminium).
- Eyelet 30mm ID.

PRODUCT CODE: TILEL001+RIVETS

| Components | Description | Material | Qty |
|-----------------|-----------------|-----------|-----|
| TILEL001_SFM | TileLink Anchor | 316SS | 1 |
| RIVET_8mm(27.7) | Rivet: 8mm | Aluminium | 5 |



Timber Frame Structure



Metal Frame Structure

Tools Required for Installation

| | | |
|--------------|--|-----------------|
| GESIPA001.01 | Gesipa Powerbird BT Cordless Rivet Tool (includes extra battery) | Details Page 65 |
| GESIPA001.02 | Gesipa Hand Rivet Tool (HN 2) | Details Page 65 |

STEEL PURLIN MOUNTED ANCHORS



ANCHORS

SafetyLink provides a comprehensive online platform that enables you to participate in installation training, access product information and compile your certificate information in the one place.

The structure must be assessed by an engineer, unless it is clear to a competent person that the structure is adequate.



Installation Video

- The RetroLink anchor points are designed for use on metal roofing with steel purlin structure.
- Installation is a simple task requiring no access from underside of the roof, requiring only one 25mm hole to be drilled into the roof sheeting and through the purlin.
- Waterproofing washer combined with an o ring seals the hole, eliminating any waterproofing issues.
- Easy installation into concealed areas.

| Product Code | Description | Weight (kg) |
|--------------|---|-------------|
| RETRO003 | RetroLink Anchor with Flat Washer | 0.447 |
| RETRO004 | RetroLink Anchor with Raised Washer <i>(Cannot be used for Abseiling)</i> | 0.447 |
| SWIVL001 | SwiveLink Anchor with Nut | 0.568 |



RetroLink Anchor with Flat Washer

FALL ARREST & ABSEIL



- RetroLink anchor can be installed onto a steel C or Z purlin, where no access is available from underneath the roof. Steel purlins must be a minimum 1.2mm gauge.
- **Abseiling** and **Fall Arrest** anchor with an unobtrusive design that requires no special tooling and minimal penetration to the roof sheeting.
- 360° Multi-directional, enabling full rotation around the anchor.
- Drill a 25mm hole.

PRODUCT CODE: RETRO003

| Components | Description | Material | Qty |
|---------------|----------------------------------|----------|-----|
| EYEBOLT-RETRO | Retro Eyebolt | 316SS | 1 |
| RETRO-WASHER | Retro Washer with Foam | 316SS | 1 |
| RETRO-TUBE | Retro Tube with Positioning Ties | 316SS | 1 |

RetroLink Anchor with Raised Washer

FALL ARREST



- RetroLink anchor with raised washer can be installed onto a steel C or Z purlin, where no access is available from underneath the roof. Steel purlins must be a minimum 1.2mm gauge.
- SafetyLink RetroLink anchors installed to the raised section of roof sheet profiles are **NOT suitable for Rope Access/Abseiling** due to potential roof sheet distortion under live loading.
- 360° Multi-directional, enabling full rotation around the anchor.
- Drill a 25mm hole.

PRODUCT CODE: RETRO004

| Components | Description | Material | Qty |
|---------------------|----------------------------------|----------|-----|
| EYEBOLT-RETRO | Retro Eyebolt | 316SS | 1 |
| RETRO-WASHER-RAISED | Retro Raised Washer with Foam | 316SS | 1 |
| RETRO-TUBE | Retro Tube with Positioning Ties | 316SS | 1 |

SwiveLink

FALL ARREST & ABSEIL

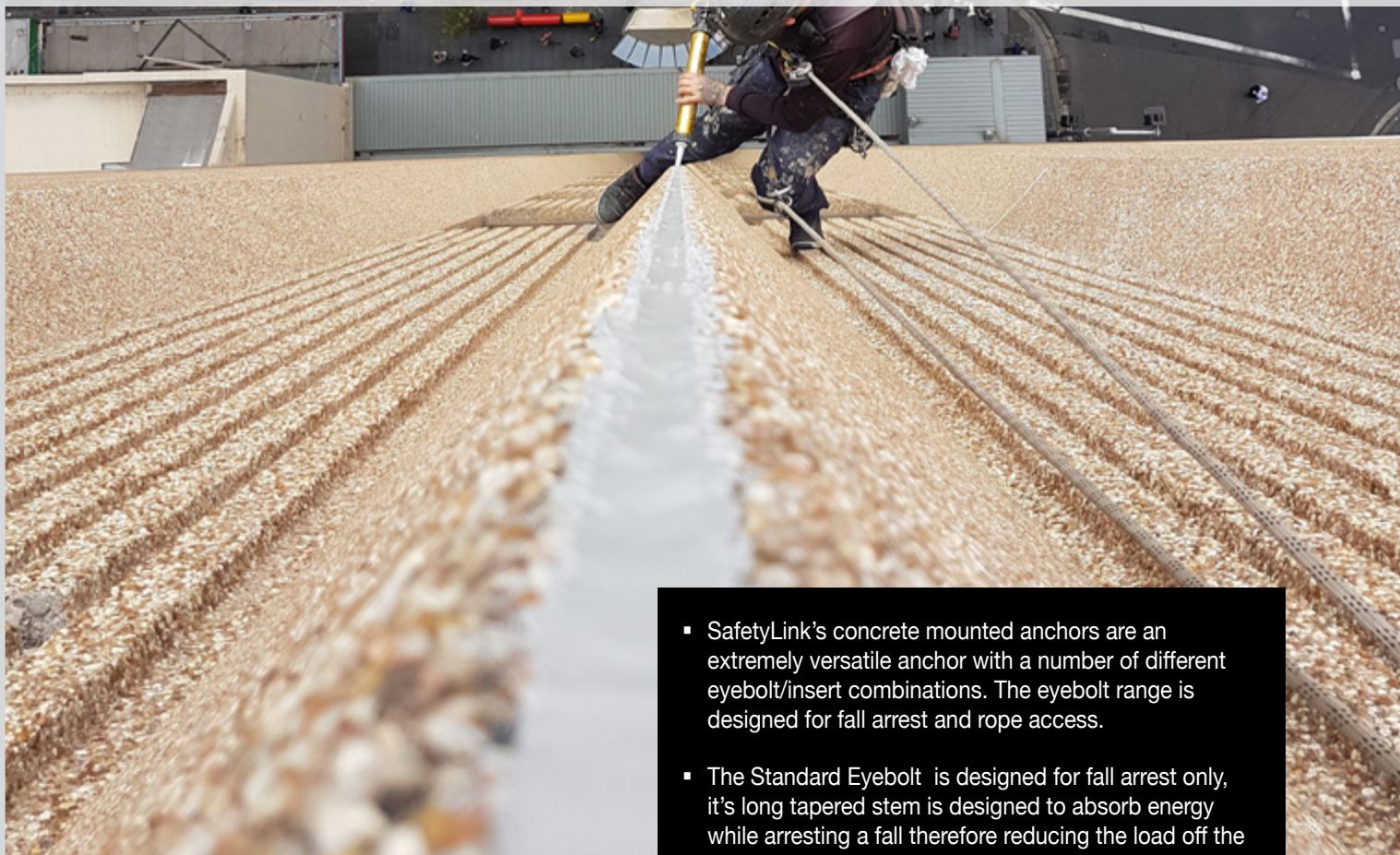


- SwiveLink anchor point is used in steel column structures.
- Non obtrusive concrete anchor designed to swivel 360 degrees.
- Built in shock absorber with the convenience of a swivelling eyebolt.
- Drill a 28mm hole

PRODUCT CODE: SWIVL001

| Components | Description | Material | Qty |
|---------------|--------------------------------|----------|-----|
| SWIVELINK | SwiveLink: Swiveling Unit 83mm | 316SS | 1 |
| SWIVELINK NUT | SwiveLink Nut | 316SS | 1 |

CONCRETE MOUNTED ANCHORS



ANCHORS

SafetyLink provides a comprehensive online platform that enables you to participate in installation training, access product information and compile your certificate information in the one place.

The structure must be assessed by an engineer, unless it is clear to a competent person that the structure is adequate.



Installation Video

- SafetyLink's concrete mounted anchors are an extremely versatile anchor with a number of different eyebolt/insert combinations. The eyebolt range is designed for fall arrest and rope access.
- The Standard Eyebolt is designed for fall arrest only, it's long tapered stem is designed to absorb energy while arresting a fall therefore reducing the load off the structure and the person in the event of a fall.
- The Abseiling Eyebolt is a fall arrest rope access anchor designed to withstand a live load without activating the bending motion that occurs when arresting a fall.
- Where a low profile design is more desirable a Collared Eyebolt can be used to achieve this.
- To comply with current Standards each concrete anchor must be tested after installation.

| Product Code | Description | Weight (kg) |
|--------------------|---|-------------|
| CONCL001(ABSEIL) | ConcreteLink Anchor with Abeil Eyebolt | 0.466 |
| CONCL001(STANDARD) | ConcreteLink Anchor with Standard Eyebolt | 0.509 |
| CONCL002 | ConcreteLink Anchor with Collared Eyebolt | 0.491 |
| CONCL005 | ConcreteLink One Piece Anchor | 0.332 |





ConcreteLink Anchor with Abseil Eyebolt

FALL ARREST & ABSEIL



- ConcreteLink can be ordered with Standard or Abseil Eyebolt. The Standard Eyebolt is designed for fall arrest only. The Abseil Eyebolt is designed to withstand a live load without activating the bending motion that occurs when arresting a fall.
- 360° Multi-directional, enabling full rotation around the anchor.
- Chemically anchored into concrete.
- Drill a 28mm hole to a depth of 90mm.
- Eyelet 28mm ID.

PRODUCT CODE: CONCL001 (Advise Standard or Abseil Eyebolt)

| Components | Description | Material | Qty |
|---|---|----------|-----|
| NUT M16 | Nut M16 | 316SS | 1 |
| CON-INSERT | ConcreteLink Insert M16 90mm | 316SS | 1 |
| <i>Advise if you require Standard or Abseil Eyebolt</i> | | | |
| EYEBT001 | Standard Eyebolt (Bearing Length 178mm) | 316SS | 1 |
| EYEBT002 | Abseil Eyebolt (Bearing Length 130mm) | 316SS | 1 |

ConcreteLink Anchor with Collared Eyebolt

FALL ARREST & ABSEIL



- ConcreteLink Collared Eyebolt is a low profile anchor point designed for use in concrete, where the eyebolt can be removed if required.
- 360° Multi-directional, enabling full rotation around the anchor.
- Chemically anchored into concrete.
- Drill a 28mm hole to a depth of 90mm.
- Eyelet 35mm ID.

PRODUCT CODE: CONCL002

| Components | Description | Material | Qty |
|------------------|------------------------------|----------|-----|
| EYEBOLT M16x26mm | Collared Eyebolt M16 26mm | 316SS | 1 |
| CON-INSERT | ConcreteLink Insert M16 90mm | 316SS | 1 |

ConcreteLink One Piece Unit

FALL ARREST & ABSEIL



- ConcreteLink One Piece Unit is a low profile anchor point designed for use in concrete, where the eyebolt will remain in place exposed for attachment.
- 360° Multi-directional, enabling full rotation around the anchor.
- Chemically anchored into concrete.
- Drill a 18mm hole to a depth of 90mm.
- Eyelet 35mm ID.

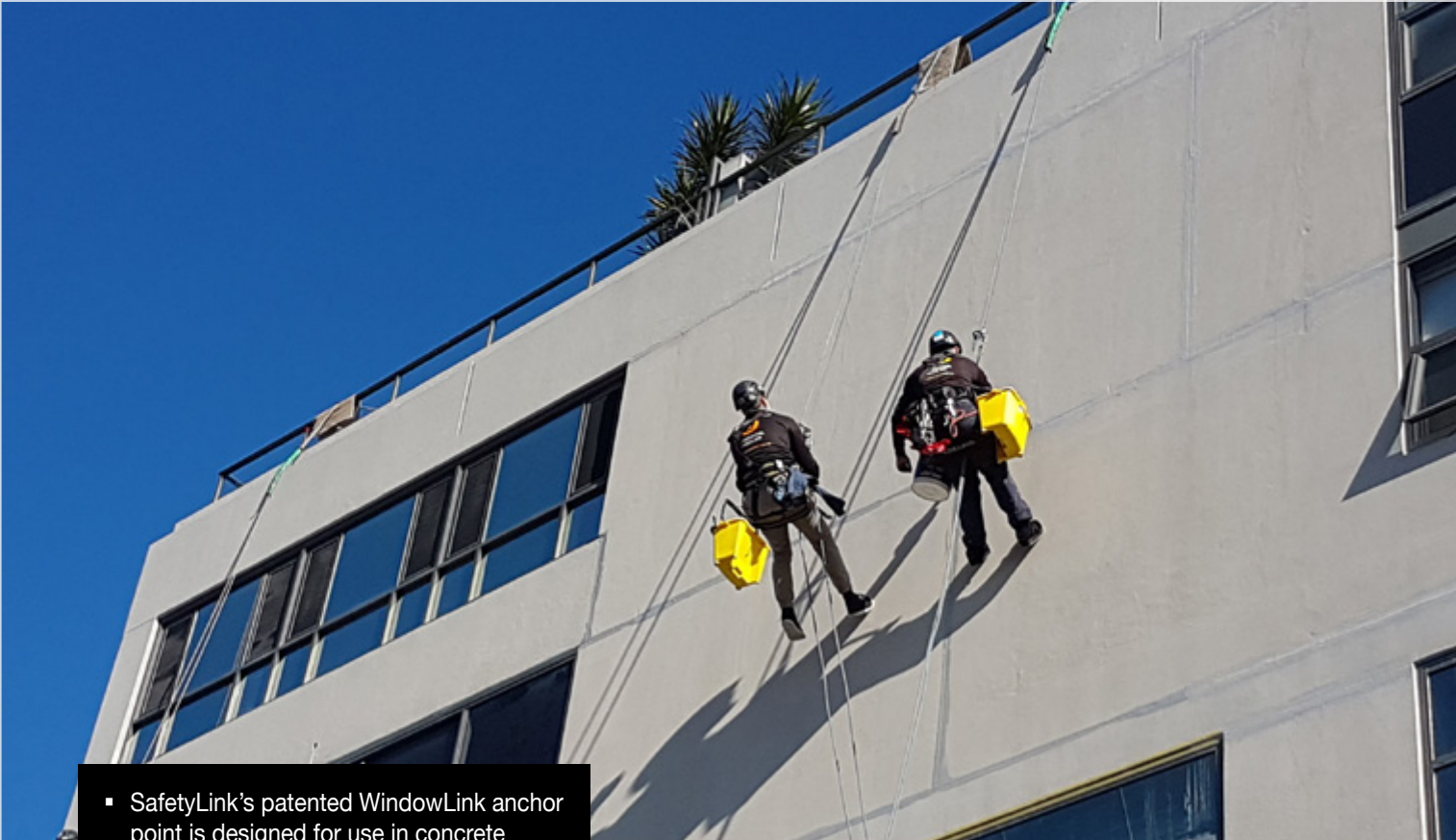
PRODUCT CODE: CONCL005

| Components | Description | Material | Qty |
|------------|---------------------------|----------|-----|
| CONCL005 | One Piece Concrete Anchor | 316SS | 1 |

Recommended Tools for Installation

| | | |
|-----------------|--|-----------------|
| CHEMICAL ANCHOR | Hilti RE500 or Hilti HY200 as per Hilti Product Supplement Data sheets | Hilti |
| TESTER001 | Hydrajaws Safety Eyebolt and Ringbolt Tester Kit (0-15kN Gauge) | Details Page 69 |

CONCRETE MOUNTED ANCHORS



- SafetyLink's patented WindowLink anchor point is designed for use in concrete structures where the eyebolt will remain concealed until needed for use.
- The WindowLink can be placed outside or within the building, creating easy access for window maintenance.
- Both the WindowLink and SwiveLink are designed to swivel 360 degrees with a built in shock absorber.
- To comply with Australian Standards each concrete anchor must be tested after installation.

ANCHORS

SafetyLink provides a comprehensive online platform that enables you to participate in installation training, access product information and compile your certificate information in the one place.

The structure must be assessed by an engineer, unless it is clear to a competent person that the structure is adequate.

| Product Code | Description | Weight (kg) |
|--------------|---------------------|-------------|
| WINDL001 | WindowLink Anchor | 0.476 |
| SWIVL002 | SwiveLink Anchor | 0.495 |
| CONCL006 | Concrete Brass Bolt | 0.037 |





WindowLink

FALL ARREST & ABSEIL



- WindowLink anchor point designed for use in concrete structures where the eyebolt will remain concealed until needed for use.
- Designed to swivel 360 degrees with built in shock absorber.
- Discreet stainless steel cover.
- Chemically anchored into concrete.
- 55mm core drill to 20mm depth.
- 28mm drill to 122mm depth.
- Eyelet 28mm ID.

PRODUCT CODE: WINDL001

| Components | Description | Material | Qty |
|------------|------------------------------|----------|-----|
| WINDL001 | Wall Mounted Concrete Anchor | 316SS | 1 |

SwiveLink

FALL ARREST & ABSEIL



- SwiveLink anchor point designed for use in concrete structures with the convenience of a swivelling eyebolt.
- Designed to swivel 360 degrees with built in shock absorber.
- Chemically anchored into concrete.
- Drill a 28mm hole to a depth of 90mm.
- Eyelet 28mm ID.

PRODUCT CODE: SWIVL002

| Components | Description | Material | Qty |
|------------|--------------------------|----------|-----|
| SWIVL002 | SwiveLink Eyebolt Anchor | 316SS | 1 |

Concrete Brass Bolt



- Brass Bolt to be used with concrete insert when eyebolt not in use.
- Keeps internal section of insert free from debris.

PRODUCT CODE: CONCL006

| Components | Description | Material | Qty |
|------------|---------------------|----------|-----|
| CONCL006 | Concrete Brass Bolt | Brass | 1 |

Recommended Tools for Installation

| | | |
|-----------------|---|-----------------|
| CHEMICAL ANCHOR | Hilti RE500 or Hilti HY200 as per Hilti Product Supplement Data sheets. | Hilti |
| TESTER001 | Hydr jaws Safety Eyebolt and Ringbolt Tester Kit (0-15kN Gauge) | Details Page 69 |

RAFTER MOUNTED ANCHORS



ANCHORS

SafetyLink provides a comprehensive online platform that enables you to participate in installation training, access product information and compile your certificate information in the one place.

The structure must be assessed by an engineer, unless it is clear to a competent person that the structure is adequate.

- The RafterLink and HingeLink units include SafetyLink's patented Eyebolts. The length of the eyebolt enables it to protrude above the roof structure when installing into timber structures.
- Standard Eyebolt is designed for fall arrest, it's long tapered stem is designed to absorb energy while arresting a fall therefore reducing the load off the structure and the person attached to the anchor.
- Abseil Eyebolt can be adapted to the RafterLink forming an anchor from where you can abseil, creating a safe work station for hard to get to maintenance on buildings.

| Product Code | Description | Weight (kg) |
|-------------------|--|-------------|
| RAFTR001 | RafterLink Anchor with Standard Eyebolt | 1.446 |
| RAFTR001 + ABSEIL | RafterLink Anchor with Abseil Eyebolt | 1.423 |
| RAFTR004 | Side Mounted RafterLink Anchor with Standard Eyebolt | 1.682 |
| RAFTR004 + ABSEIL | Side Mounted RafterLink Anchor with Abseil Eyebolt | 1.659 |
| HINGE001 | HingeLink Anchor with Standard Eyebolt | 1.301 |
| HINGE001+ABSEIL | HingeLink Anchor with Abseil Eyebolt | 1.258 |



RafterLink Anchor

FALL ARREST & ABSEIL



- RafterLink anchor point is designed for use on timber structures where there is easy access to the top of the rafter.
- Fixing required eight (8) type 17 hex head 14g x 75mm screws.
- 360° Multi-directional, will arrest a fall from any direction.
- Eyelet 28mm ID.

PRODUCT CODE: RAFTR001 (Advise Standard or Abseil Eyebolt)

| Components | Description | Material | Qty |
|---|---|----------|-----|
| WASHER 75mm Square | 75mm Rubber Hat Washer | Rubber | 1 |
| RAFTER-BASE | RafterLink Base 0 Degree Pitch | 316SS | 1 |
| <i>Advise if you require Standard or Abseil Eyebolt</i> | | | |
| EYEBT001 | Standard Eyebolt (Bearing Length 178mm) | 316SS | 1 |
| EYEBT002 | Abseil Eyebolt (Bearing Length 130mm) | 316SS | 1 |

Side Mounted RafterLink Anchor

FALL ARREST & ABSEIL



- RafterLink Side Mounted anchor point is designed for use on timber structures where there is easy access to the rafter, installs onto the side of the rafter.
- Fixings required, eight (8) type 17 Hex Head 14g x 50mm screws.
- 360° Multi-directional, will arrest a fall from any direction.
- Eyelet 28mm ID.

PRODUCT CODE: RAFTR004 (Advise Standard or Abseil Eyebolt)

| Components | Description | Material | Qty |
|---|---|----------|-----|
| WASHER 75mm Square | 75mm Rubber Hat Washer | Rubber | 1 |
| RAFTER-BASE-SIDE | RafterLink Side Mounted Base | 316SS | 1 |
| <i>Advise if you require Standard or Abseil Eyebolt</i> | | | |
| EYEBT001 | Standard Eyebolt (Bearing Length 178mm) | 316SS | 1 |
| EYEBT002 | Abseil Eyebolt (Bearing Length 130mm) | 316SS | 1 |

HingeLink Anchor

FALL ARREST & ABSEIL



- HingeLink anchor point is designed for use on metal/tiled/timber structures where there is easy access to the underside of the roof, the base of the unit is hinged enabling flexible means of attachment.
- Secure with four (4) M12 bolts and 2 Hex Head 12g 50mm screws.
- 360° Multi-directional, will arrest a fall from any direction.
- Eyelet 28mm ID.

PRODUCT CODE: HINGE001 (Advise Standard or Abseil Eyebolt)

| Components | Description | Material | Qty |
|---|---|----------|-----|
| WASHER 75mm Square | 75mm Rubber Hat Washer | Rubber | 1 |
| HINGE-BASE-SS | Hingelink Base | 316SS | 1 |
| <i>Advise if you require Standard or Abseil Eyebolt</i> | | | |
| EYEBT001 | Standard Eyebolt (Bearing Length 178mm) | 316SS | 1 |
| EYEBT002 | Abseil Eyebolt (Bearing Length 130mm) | 316SS | 1 |

SURFACE MOUNTED ANCHORS



ANCHORS

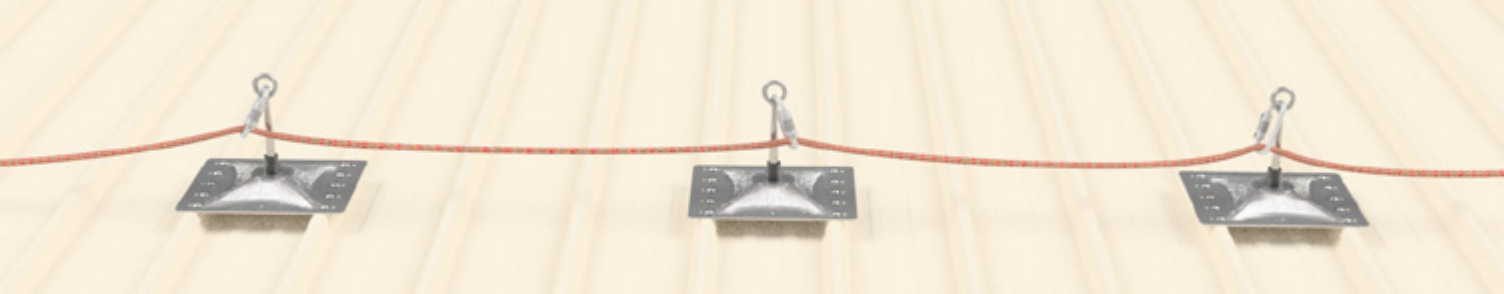
SafetyLink provides a comprehensive online platform that enables you to participate in installation training, access product information and compile your certificate information in the one place.

The structure must be assessed by an engineer, unless it is clear to a competent person that the structure is adequate.

- Classic surface mounted roof anchor is multi directional, attaching to the top of the profile on the roof sheeting for superior waterproofing.
- SafetyLink eyebolt is forged from 316 stainless steel with powerful energy absorbing qualities.
- The SafetyLink eyebolt was developed and tested extensively to maximize energy absorption while retaining its strength when arresting a fall.
- The eyebolts tapered design enables it to bend like a fishing pole to reduce the load back on the structure and the person attached to the anchor.
- Surface mounted anchors **must not** be used for rope access (abseiling).

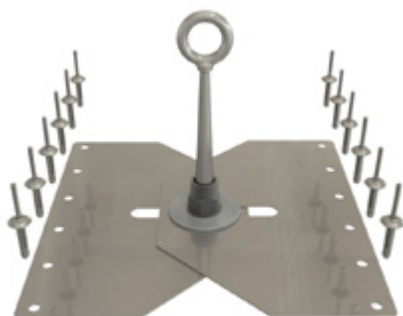
| Product Code | Description | Weight (kg) |
|---------------------|--|-------------|
| SURFL001 | Surface Mounted Anchor (2 Side Plates) | 1.907 |
| SURFL001+Rivets | Surface Mounted Anchor (2 Side Plates) with 12 Aluminium Rivets | 1.991 |
| SURFL001-BROWNBUILT | Surface Mounted Anchor (2 Side Plates Bent for Brownbuilt Roof Profile) with 12 x 34mm Rivets (yellow) | 1.991 |
| ASURF001 | Surface Mounted Anchor (Aluminium Plate) | 0.892 |
| ASURF001+Rivets | Surface Mounted Anchor (Aluminium Plate) with 10 Aluminium Rivets | 0.962 |
| HSURF001 | Surface Mounted Anchor (Stainless Steel Plate) | 1.420 |
| HSURF001+Rivets | Surface Mounted Anchor (Stainless Steel Plate) with 10 Aluminium Rivets | 1.490 |





Classic SurfaceLink Anchor (Adjustable Side Plates)

FALL ARREST



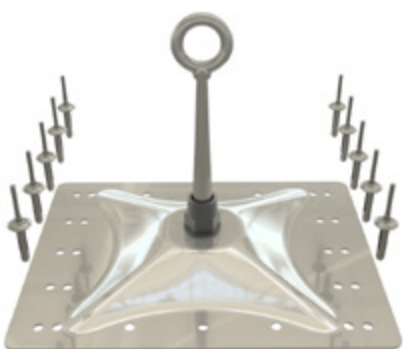
- SurfaceLink anchor point with two adjustable plates, designed for use on metal roof sheeting where access to building structure is difficult.
- Plates can be bent to suit Brownbuilt Roof Sheetting.
- 360° Multi-directional, enabling full rotation around the anchor.
- Eyelet 28mm ID.

PRODUCT CODE: SURFL001+FIXINGS

| Components | Description | Material | Qty |
|---------------------|--|----------|-----|
| EYEBOLT-SURFACELINK | SurfaceLink Eyebolt (Bearing Length 130mm) | 316SS | 1 |
| SURF-SIDEPLATE | SurfaceLink Side Plate with foam | 316SS | 2 |
| WASHER 70od-SS | Washer: 70mm OD | 316SS | 1 |
| WASHER 50od-SS | Washer: 50mm OD | 316SS | 1 |
| NUT M16 | Nut: M16 | 316SS | 1 |
| RIVET_8mm(27.7) | Rivet: 8mm | Alum | 12 |

Classic SurfaceLink Anchor (Aluminium Plate)

FALL ARREST



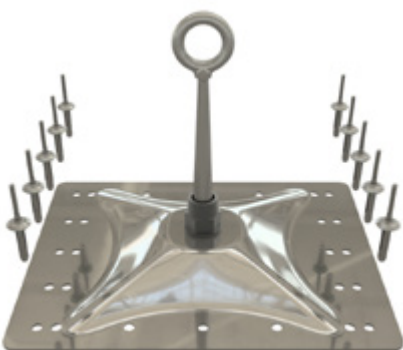
- SurfaceLink anchor point designed for use on metal roof sheeting where access to building structure is difficult.
- Adjustable design to suit different roof profiles.
- 360° Multi-directional, enabling full rotation around the anchor.
- Eyelet 28mm ID.

PRODUCT CODE: ASURF001+FIXINGS

| Components | Description | Material | Qty |
|---------------------|--|----------|-----|
| EYEBOLT-SURFACELINK | SurfaceLink Eyebolt (Bearing Length 130mm) | 316SS | 1 |
| ADV-PLATE-AL-H-305 | SurfaceLink Plate (precut holes) | *MGA | 1 |
| WASHER 70od-Plastic | Washer: 70mm OD | Plastic | 1 |
| WASHER 50od-SS | Washer: 50mm OD | 316SS | 1 |
| NUT M16 | Nut: M16 | 316SS | 1 |
| FOAM-TAPE | Adhesive single sided tape | Foam | 2 |
| RIVET_8mm(27.7) | Rivet: 8mm | Alum | 10 |

Classic SurfaceLink Anchor (Stainless Steel Plate)

FALL ARREST



- SurfaceLink anchor point designed for use on metal roof sheeting where access to building structure is difficult.
- Adjustable design to suit different roof profiles.
- 360° Multi-directional, enabling full rotation around the anchor.
- Eyelet 28mm ID.

PRODUCT CODE: HSURF001+FIXINGS

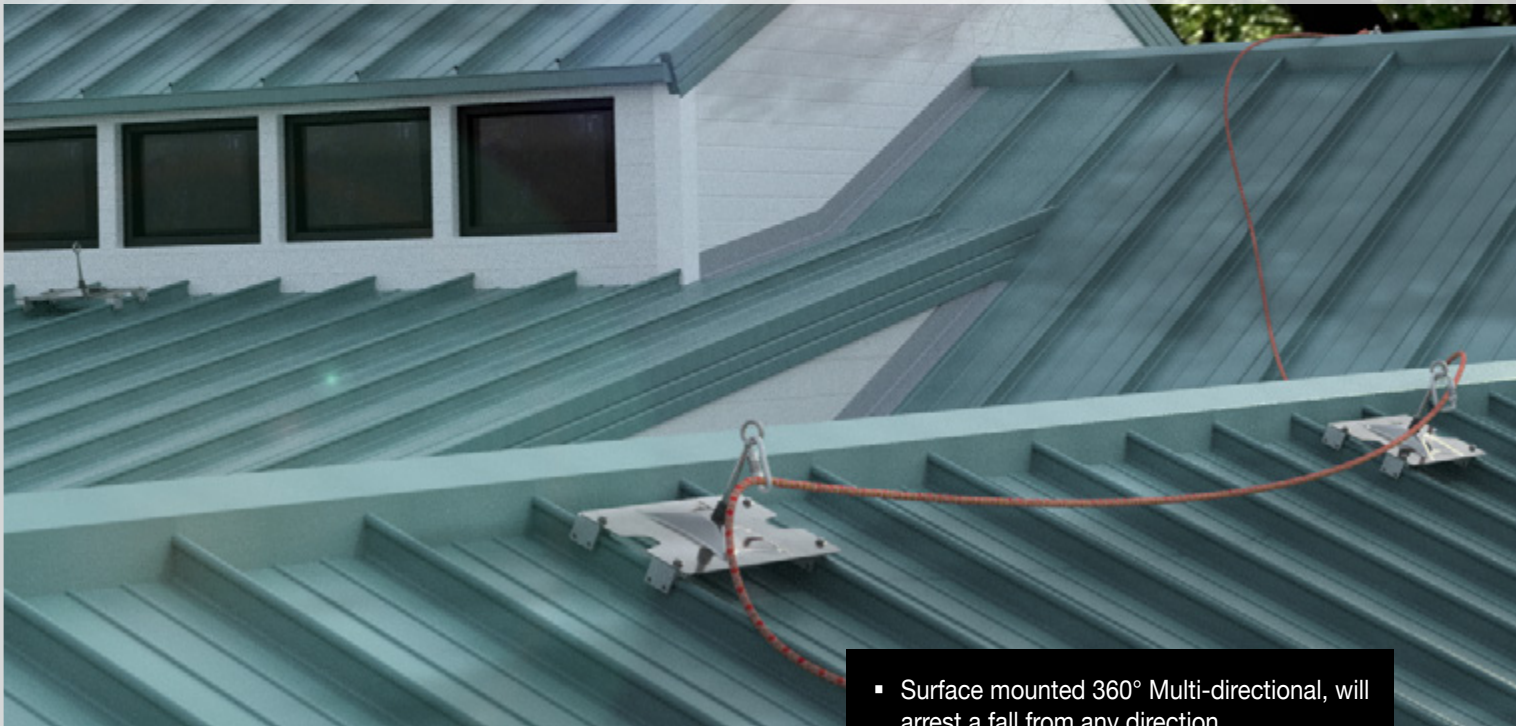
| Components | Description | Material | Qty |
|---------------------|--|----------|-----|
| EYEBOLT-SURFACELINK | SurfaceLink Eyebolt (Bearing Length 130mm) | 316SS | 1 |
| ADV-PLATE-SS-H-305 | SurfaceLink Plate (precut holes) | 316SS | 1 |
| WASHER 50od-SS | Washer: 50mm OD | 316SS | 1 |
| NUT M16 | Nut: M16 | 316SS | 1 |
| FOAM-TAPE | Adhesive single sided tape | Foam | 2 |
| RIVET_8mm(27.7) | Rivet: 8mm | Alum | 10 |

Tools Required for Installation

| | | |
|--------------|--|-----------------|
| GESIPA001.01 | Gesipa Powerbird BT Cordless Rivet Tool (includes extra battery) | Details Page 65 |
| GESIPA001.02 | Gesipa Hand Rivet Tool (HN 2) | Details Page 65 |

*MGA = Marine Grade Aluminium

SURFACE MOUNTED ANCHORS



ANCHORS

SafetyLink provides a comprehensive online platform that enables you to participate in installation training, access product information and compile your certificate information in the one place.

The structure must be assessed by an engineer, unless it is clear to a competent person that the structure is adequate.

- Surface mounted 360° Multi-directional, will arrest a fall from any direction.
- Install using S5 Clamp Brackets, contact SafetyLink to find the bracket to suit your roof sheeting.
- Brackets clamp to the roof profile with no penetration to the roof sheeting for superior waterproofing.

SurfaceLink S5 Bracket Anchor

FALL ARREST



- A surface mounted height safety anchor point for use on standing seam roof profiles where access to structure is difficult or roof penetrations are not permitted.
- 360° Multi-directional, enabling full rotation around the anchor.
- Eyelet 28mm ID.

PRODUCT CODE: SURFCF001+FIXINGS

| Components | Description | Material | Qty |
|---------------------|--|----------|-----|
| EYEBOLT-SURFACELINK | SurfaceLink Eyebolt (Bearing Length 130mm) | 316SS | 1 |
| ADV-PLATE-AL-SIZE | SurfaceLink Plate (Plate Selector) | *MGA | 1 |
| WASHER 70od-Plastic | Washers: 70mm OD | Plastic | 2 |
| WASHER 50od-SS | Washers: 50mm OD | 316SS | 1 |
| NUT M16 | Nut: M16 | 316SS | 1 |
| S5_?_BRACKET | S5 Clamp (ADIVSE TYPE) | Alum/SS | 4 |



SURFACE MOUNTED PLATE SELECTOR

| Description | Photo | Material | Fixings | Weight (kg) |
|---|-------|----------|-----------------------------|-------------|
| SURFACELINK PLATE – STANDARD (Blank) PART CODE: ADV-PLATE-AL-305 SIZE: 305mm x 243mm x 3mm ROOF PROFILE: Multitude | | *MGA | Rivets or S5 Brackets | 0.554 |
| SURFACELINK PLATE – STANDARD (Holes) PART CODE: ADV-PLATE-AL-305-H SIZE: 305mm x 243mm x 3mm ROOF PROFILE: Trimdek (195), Corrugated (228) and Kliplok (258), can also be used with 16x 14 Gauge 50mm Hex Screws in 15mm Plywood | | *MGA | Rivets | 0.554 |
| SURFACELINK PLATE – STANDARD (Holes) PART CODE: ADV-PLATE-SS-305-H SIZE: 305mm x 243mm x 2mm ROOF PROFILE: Trimdek (195), Corrugated (228) and Kliplok (258), can also be used with 16x 14 Gauge 50mm Hex Screws in 15mm Plywood | | 316SS | Rivets | 1.083 |
| SURFACELINK PLATE – 370 (Blank) PART CODE: ADV-PLATE-AL-370 SIZE: 370mm x 243mm x 3mm ROOF PROFILE: Multitude | | *MGA | Rivets or S5 Brackets | 0.710 |
| SURFACELINK PLATE – 370 (Holes) PART CODE: ADV-PLATE-AL-370-H SIZE: 370mm x 243mm x 3mm (Holes at 333mm) ROOF PROFILE: Multitude | | *MGA | Rivets | 0.710 |
| SURFACELINK PLATE – 450 (Blank) PART CODE: ADV-PLATE-AL-450 SIZE: 450mm x 243mm x 4mm (option 4x Holes at 400mm profile-Non Stock Items) ROOF PROFILE: Standing Seam | | *MGA | Rivets or S5 Brackets | 1.117 |
| SURFACELINK PLATE – 550 (Blank) PART CODE: ADV-PLATE-AL-550 SIZE: 550mm x 243mm x 4mm (option holes at 300mm-400mm-500mm-Non Stock Item) ROOF PROFILE: Standing Seam | | *MGA | S5 Brackets | 1.365 |
| SURFACELINK PLATE – 650 (Blank) PART CODE: ADV-PLATE-AL-650 SIZE: 650mm x 243mm x 4mm (option holes at 300mm-400mm-500mm-Non Stock Item) ROOF PROFILE: Standing Seam | | *MGA | S5 Brackets | 1.365 |
| SURFACELINK PLATE - 295 PART CODE: ADV-PLATE-SS-295SQ SIZE: 295mm x 295mm Square ROOF PROFILE: Membrane | | 316SS | Toggles | 0.900 |

*MGA = Marine Grade Aluminium

Anchors

Lifelines

Shuttles/Fittings

Roof Access

Tools

safetylink.com

EYEBOLTS & EYENUTS



ANCHORS

The structure must be assessed by an engineer, unless it is clear to a competent person that the structure is adequate.

SafetyLink provides a comprehensive online platform that enables you to participate in installation training, access product information and compile your certificate information in the one place.

Eyenut

FALL ARREST & ABSEIL



- Single person anchor, rated at 15kN.
- Attachment hole internal diameter 13.5mm, no thread.
- Complies with EN795.
- Eyelet 40mm ID.

PRODUCT CODE: EYENUT ID13.5NOTHREAD

| Components | Description | Material | Qty |
|-----------------------|-------------|----------|-----|
| EYENUT ID13.5NOTHREAD | Eyenut | 316SS | 1 |





- The Standard Eyebolt is designed for fall arrest only.
- Available to attach to a multitude of different mounting systems.
- 360° Multi-directional.
- Single person anchor, rated at 15kN.
- Thread M16.
- Eyelet 28mm ID.

PRODUCT CODE: EYEBY001

| Components | Description | Material | Qty |
|------------|---|----------|-----|
| EYEBT001 | Standard Eyebolt (Bearing Length 178mm) | 316SS | 1 |

Abseil Eyebolt

FALL ARREST & ABSEIL



- The Abseil Eyebolt is designed to withstand a live load without activating the bending motion that occurs when arresting a fall.
- Available to attach to a multitude of different mounting systems (not to be used with surface mounted anchor).
- 360° Multi-directional.
- Single person anchor, rated at 15kN.
- Thread M16.
- Eyelet 28mm ID.

PRODUCT CODE: EYEBT002

| Components | Description | Material | Qty |
|------------|---------------------------------------|----------|-----|
| EYEBT002 | Abseil Eyebolt (Bearing Length 130mm) | 316SS | 1 |

Collared Eyebolt

FALL ARREST & ABSEIL



- The Collared Eyebolt is a low profile anchor point.
- 360° Multi-directional.
- Single person anchor, rated at 15kN.
- Thread M16
- Eyelet 35mm ID.

PRODUCT CODE: EYEBOLT M16x26mm

| Components | Description | Material | Qty |
|------------------|---------------------------|----------|-----|
| EYEBOLT M16x26mm | Collared Eyebolt M16 26mm | 316SS | 1 |

Eyenut M16

FALL ARREST & ABSEIL



- Available to attach to a multitude of different mounting systems.
- Single person anchor, rated at 15kN.
- Internal Thread M16.
- Eyelet 35mm ID.

PRODUCT CODE: EYENUT M16

| Components | Description | Material | Qty |
|------------|------------------------------|----------|-----|
| EYENUT M16 | Eyenut: Collared Female 16ID | 316SS | 1 |

TEMPORARY ANCHOR



ANCHORS

SafetyLink provides a comprehensive online platform that enables you to participate in installation training, access product information and compile your certificate information in the one place.

The structure must be assessed by an engineer, unless it is clear to a competent person that the structure is adequate.

- SafetyLink's temporary roof anchor the TempLink 3000 has been designed for use where an anchor is required for a temporary period of time in a location that does not need to be revisited.
- TempLink 3000 is a patented multi-directional fall device designed to absorb energy when a fall is arrested.
- The TempLink 3000 is an extremely useful item for any person wishing to do roof maintenance where there is no permanent safety anchors.
- The design incorporates the same stand out features of all our height safety anchors maximising energy absorption, reducing the load back onto the structure and the person attached to the anchor.

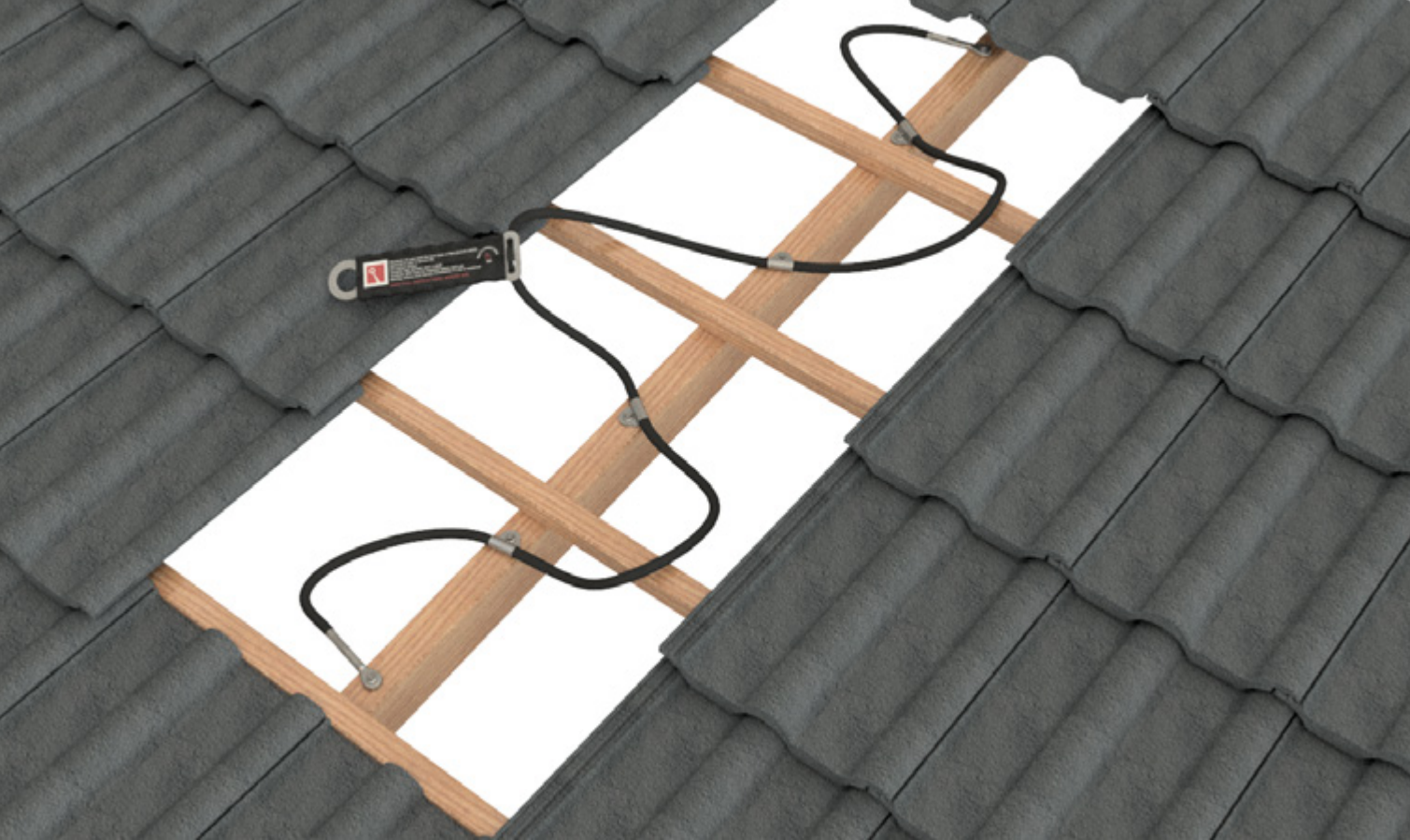


Installation Video
on Metal Roof



Installation Video
on Tile Roof





TempLink 3000

FALL ARREST

- Lightweight compact unit, enabling easy manoeuvring to desired location.
- The TempLink can be installed directly on **timber rafters** or through **metal roof sheeting** to battens.
- Secure with six (6) 14g 75mm roofing screws.
- 360° Multi-directional, enabling full rotation around the anchor.
- One person anchor.
- Easy to secure with adjustable stainless steel mounting tabs.
- UV coated cable.
- Protective rubberised sleeve preventing damage to roof materials.
- Handy carry bag with installation instructions.
- Eyelet 33.8mm ID.

| Product Code | Description | Material | Qty | Weight (kg) |
|--------------|----------------------------------|----------|-----|-------------|
| TEMPL003 | TempLink 3000 - Temporary Anchor | 316SS | 1 | 1.019 |



‘Innovative Fall Protection’

SafetyLink's horizontal lifeline systems make traversing along our lifelines simple and easy, eliminating the need to disconnect from the line, our intermediate and corners are designed so our innovative shuttles can glide freely.



FROGLINE VIDEO



LIFELINES

The FrogLine lifelines low profile design combines effortless energy absorbing capabilities into every end, intermediate and corner anchor, consequently incorporating the line energy absorbers into the system. This inventive approach ensures our FrogLine lifeline systems are always installed with the maximum energy absorption possible regardless of the horizontal line length.

- Patented low profile design.
- Fast simplified installation.
- Advanced shock absorbing serpentine.
- Innovative built in fall indicators.
- Solid 316 stainless steel components.
- Quick connect shuttle.
- Smooth continuous transition over intermediates.



**SafetyLink will provide you with the following:**

Supply a large range of anchors points that protect workers from the ground up.

All products tested and manufactured to current Standards.

Access to online training modules 24/7.

Supply of installation guides and product data sheets.

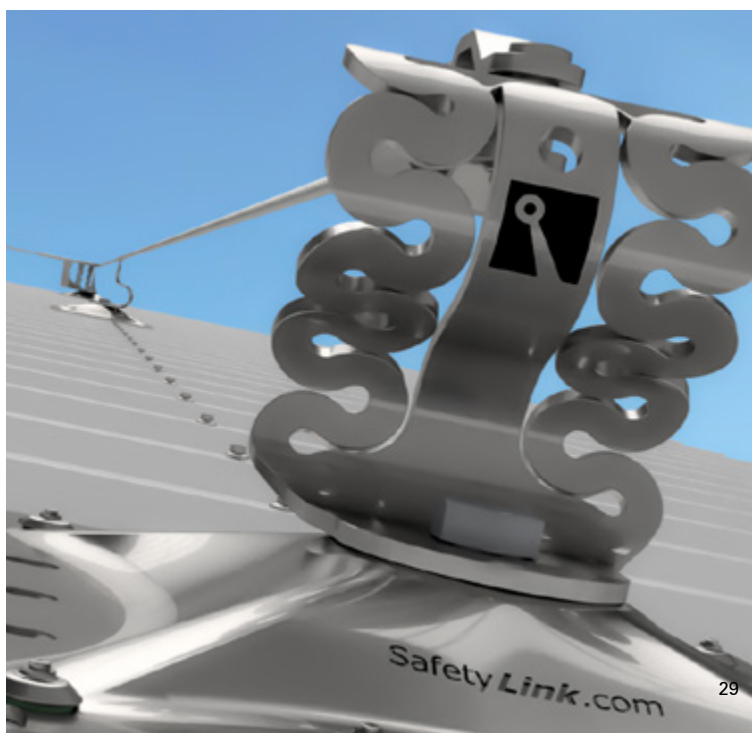
Assisted system design, layout and advice.

Extensive technical support with collectively over 100 years of experience in the height safety industry.

Benefits of choosing SafetyLink:

Innovation and attention to detail is always foremost in our minds when designing new products. The FrogLine lifeline demonstrates this with its intricate tab features. These tabs provide stability whilst the line is in tension, in addition to this they act as a fall indicator when removed from their initial position.

The FrogLine curved profile, while smart in its simplicity provides the initial shock absorbing capabilities in the event of a fall. Further extension is provided in the serpentine shapes which progressively dissipate and absorb the energy whilst retaining their strength. This duality of function is why the FrogLine design surpasses all its competitors in the field.



SURFACE MOUNTED FROGLINE



LIFELINES

Installation of any SafetyLink Lifeline Systems requires face to face training for manufacturer's accreditation.

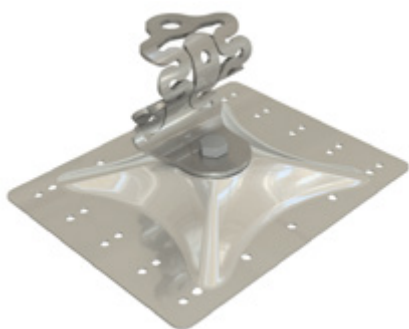
The structure must be assessed by an engineer, unless it is clear to a competent person that the structure is adequate.

- Permanent horizontal height safety lifeline system, designed to be mounted onto various metal profile roof sheeting.
- Suits pitches no greater than 25 degrees.
- Fitted where it is difficult to access the underside of the roof. Equipped with an engineered energy absorbing region to minimise loads on users and structures in the event of a fall.
- Continuous connection with 8mm stainless steel cable, utilising the FrogLine Shuttle System, up-to four users per system, two per span.

| Product Code | Description | Weight (kg) |
|--|---|-------------|
| STAT.FROGSAL001 | Surface Mounted Intermediate Anchor | 1.440 |
| STAT.FROGSAL001+Fixings | Surface Mounted Intermediate Anchor + Fixings | 1.540 |
| STAT.FROGSAL002 | Surface Mounted End Anchor | 1.454 |
| STAT.FROGSAL002+Fixings | Surface Mounted End Anchor + Fixings | 1.554 |
| STAT.FROGSAL003 | Surface Mounted Corner Anchor | 1.517 |
| STAT.FROGSAL003+Fixings | Surface Mounted Corner Anchor + Fixings | 1.617 |
| <i>To order Surface Mounted Lifeline with Stainless Steel Plates use below product codes</i> | | |
| STAT.FROGSUR001 | Surface Mounted Intermediate Anchor | 1.967 |
| STAT.FROGSUR001+Fixings | Surface Mounted Intermediate Anchor + Fixings | 2.067 |
| STAT.FROGSUR002 | Surface Mounted End Anchor | 1.981 |
| STAT.FROGSUR002+Fixings | Surface Mounted End Anchor + Fixings | 2.081 |
| STAT.FROGSUR003 | Surface Mounted Corner Anchor | 2.044 |
| STAT.FROGSUR003+Fixings | Surface Mounted Corner Anchor + Fixings | 2.144 |



Surface Mounted END Anchor

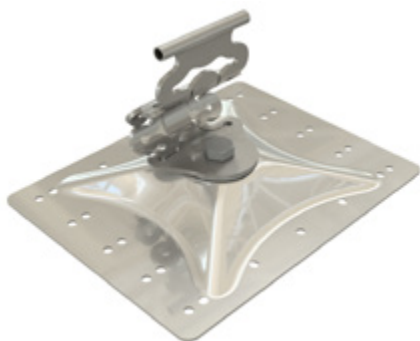


End anchor designed to be mounted on the surface of a metal roof profile as attachment points for the cable to start and terminate at.

PRODUCT CODE: STAT.FROGSAL002+FIXINGS

| Components | Description | Material | Qty |
|---------------------|--|----------|-----|
| FROGLINE END | FrogLine Base End | 316 SS | 1 |
| BOLT-M16x35mm-SS | Bolt: M16 x 35mm Set Screw | 316 SS | 1 |
| ADV-PLATE-AL-H-305 | SurfaceLink Plate 305mm (precut holes) | *MGA | 1 |
| WASHER 70od-Plastic | Washer: 70mm OD | Plastic | 2 |
| WASHER 70od-SS | Washer: 70mm OD | 316 SS | 1 |
| NUT M16 | Nut: M16 | 316 SS | 1 |
| FOAM-TAPE 29cm | Barrier Foam Tape | Foam | 2 |
| SCREW 14.10x75mm | 14-10x75mm Hex Head Screws | Coated | 2 |
| RIVET_8mm(27.7) | Rivet: 8mm | Alum | 10 |

Surface Mounted INTERMEDIATE Anchor

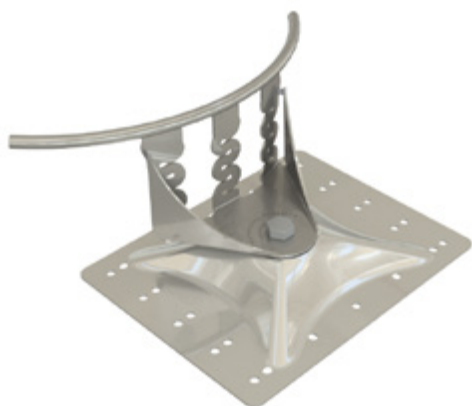


Intermediate anchor designed to be mounted on the surface of a metal roof profile to limit lifeline span distances.

PRODUCT CODE: STAT.FROGSAL001+FIXINGS

| Components | Description | Material | Qty |
|---------------------|--|----------|-----|
| FROGLINE INT | FrogLine Base Intermediate | 316 SS | 1 |
| BOLT-M16x35mm-SS | Bolt: M16 x 35mm Set Screw | 316 SS | 1 |
| ADV-PLATE-AL-H-305 | SurfaceLink Plate 305mm (precut holes) | *MGA | 1 |
| WASHER 70od-Plastic | Washer: 70mm OD | Plastic | 2 |
| WASHER 70od-SS | Washer: 70mm OD | 316 SS | 1 |
| NUT M16 | Nut: M16 | 316 SS | 1 |
| FOAM-TAPE 29cm | Barrier Foam Tape | Foam | 2 |
| SCREW 14.10x75mm | 14-10x75mm Hex Head Screws | Coated | 2 |
| RIVET_8mm(27.7) | Rivet: 8mm | Alum | 10 |

Surface Mounted CORNER Anchor



Corner anchor designed to be mounted on the surface of a metal roof profile. The lifeline cable runs through the corner anchor point re-directing it by up to 90 degrees.

PRODUCT CODE: STAT.FROGSAL003+FIXINGS

| Components | Description | Material | Qty |
|---------------------|--|----------|-----|
| FROGLINE CNR | FrogLine Base Corner | 316 SS | 1 |
| BOLT-M16x35mm-SS | Bolt: M16 x 35mm Set Screw | 316 SS | 1 |
| ADV-PLATE-AL-H-305 | SurfaceLink Plate 305mm (precut holes) | *MGA | 1 |
| WASHER 70od-Plastic | Washer: 70mm OD | Plastic | 2 |
| WASHER 70od-SS | Washer: 70mm OD | 316 SS | 1 |
| NUT M16 | Nut: M16 | 316 SS | 1 |
| FOAM-TAPE 29cm | Barrier Foam Tape | Foam | 2 |
| SCREW 14.10x75mm | 14-10x75mm Hex Head Screws | Coated | 2 |
| RIVET_8mm(27.7) | Rivet: 8mm | Alum | 10 |

Accessories Required for Complete Lifeline

| | | |
|-----------|---|-----------------|
| 1 | Tensioner with Tension Indicator (Swaged/Swageless/Crimped) | Details Page 53 |
| 1 | Termination (Swaged/Swageless/Crimped) | Details Page 53 |
| Per Metre | Cable: 8mm diameter, 7x7 wire rope, 316 Stainless Steel | Details Page 52 |
| 1 | FrogLine Shuttle with Karabiner | Details Page 55 |

*MGA = Marine Grade Aluminium

SURFACE MOUNTED FROGLINE



LIFELINES

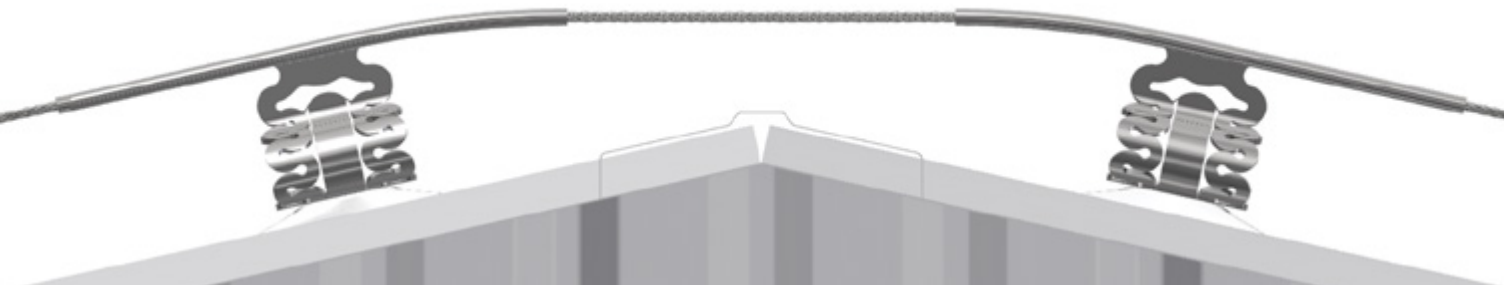
Installation of any SafetyLink Lifeline Systems requires face to face training for manufacturer's accreditation.

The structure must be assessed by an engineer, unless it is clear to a competent person that the structure is adequate.

- Permanent horizontal height safety lifeline system, designed to be mounted onto various metal profile roof sheeting.
- Suits pitches no greater than 25 degrees.
- Fitted where it is difficult to access the underside of the roof. Equipped with an engineered energy absorbing region to minimise loads on users and structures in the event of a fall.
- Continuous connection with 8mm stainless steel cable, utilising the FrogLine Shuttle System, up-to four users per system, two per span.

| Product Code | Description | Weight (kg) |
|-----------------|--|-------------|
| STAT.FROGSAL008 | Surface Mounted Intermediate EXTENDED Anchor (Aluminium Plate) | 1.536 |
| STAT.FROGSUR008 | Surface Mounted Intermediate EXTENDED Anchor (316 Stainless Steel Plate) | 2.113 |
| STAT.FROGSUR004 | Fixings for Surface Mounted Plate Installation | 0.100 |

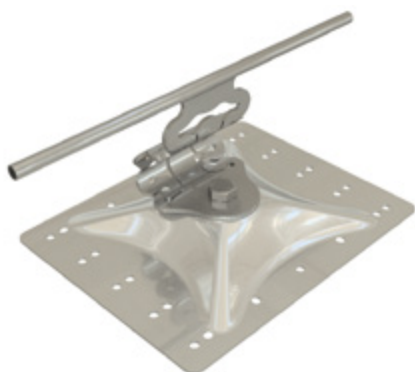




Surface Mounted INTERMEDIATE EXTENDED Anchor (Aluminium Plate)

Intermediate anchor designed to be mounted on the surface of a metal roof profile as part of a horizontal lifeline system, to limit lifeline span distances.

Longer tube to enable bending to suit small degree changes in the line.



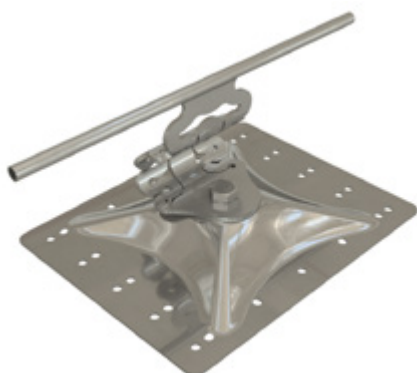
PRODUCT CODE: STAT.FROGSAL008

| Components | Description | Material | Qty |
|---------------------|--|----------|-----|
| FROGLINE INT_EXT | FrogLine Base Int EXTENDED | 316 SS | 1 |
| BOLT-M16x35mm-SS | Bolt: M16 x 35mm Set Screw | 316 SS | 1 |
| ADV-PLATE-AL-H-305 | SurfaceLink Plate 305mm (precut holes) | *MGA | 1 |
| WASHER 70od-Plastic | Washer: 70mm OD | Plastic | 2 |
| WASHER 70od-SS | Washer: 70mm OD | 316 SS | 1 |
| NUT M16 | Nut: M16 | 316 SS | 1 |
| FOAM-TAPE 29cm | Barrier Foam Tape | Foam | 2 |

Surface Mounted INTERMEDIATE EXTENDED Anchor (Stainless Plate)

Intermediate anchor designed to be mounted on the surface of a metal roof profile as part of a horizontal lifeline system, to limit lifeline span distances.

Longer tube to enable bending to suit small degree changes in the line.

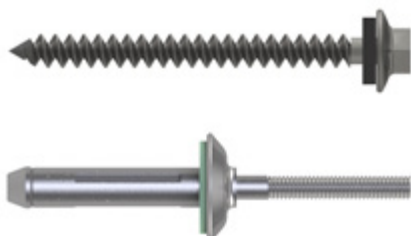


PRODUCT CODE: STAT.FROGSUR008

| Components | Description | Material | Qty |
|--------------------|--|----------|-----|
| FROGLINE INT_EXT | FrogLine Base Int EXTENDED | 316 SS | 1 |
| BOLT-M16x35mm-SS | Bolt: M16 x 35mm Set Screw | 316 SS | 1 |
| ADV-PLATE-SS-H-305 | SurfaceLink Plate 305mm (precut holes) | 316 SS | 1 |
| WASHER 70od-SS | Washer: 70mm OD | 316 SS | 1 |
| NUT M16 | Nut: M16 | 316 SS | 1 |
| FOAM-TAPE 29cm | Barrier Foam Tape | Foam | 2 |

Fixings

Fixings required to install surface mounted plate to roof sheeting.



PRODUCT CODE: STAT.FROGSUR004

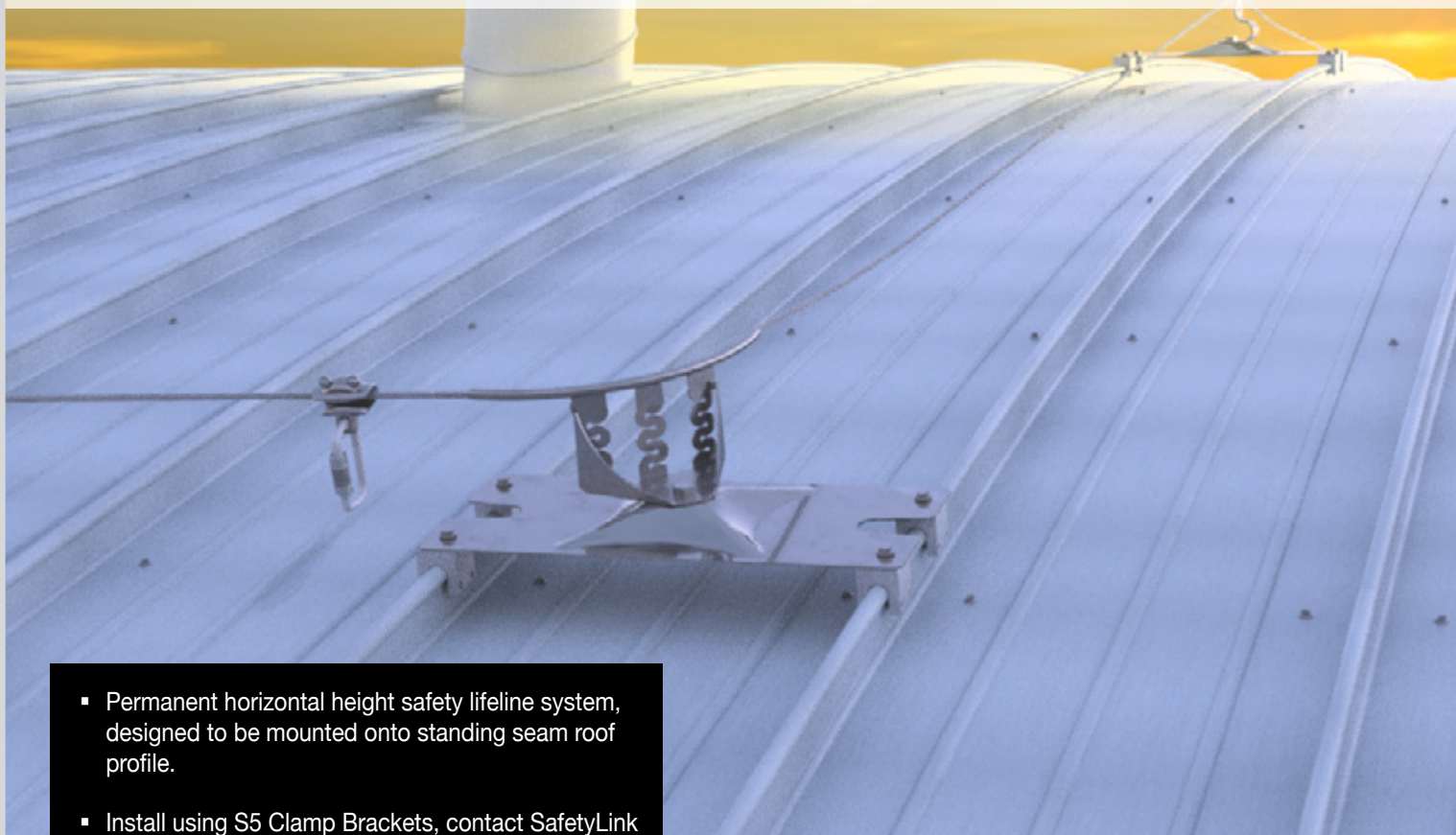
| Components | Description | Material | Qty |
|------------------|----------------------------|----------|-----|
| SCREW 14.10x75mm | 14-10x75mm Hex Head Screws | Coated | 2 |
| RIVET_8mm(27.7) | Rivet: 8mm | Alum | 10 |

Accessories Required for Complete Lifeline

| | | |
|-----------|---|-----------------|
| 1 | Tensioner with Tension Indicator (Swaged/Swageless/Crimped) | Details Page 53 |
| 1 | Termination (Swaged/Swageless/Crimped) | Details Page 53 |
| Per Metre | Cable: 8mm diameter, 7x7 wire rope, 316 Stainless Steel | Details Page 52 |
| 1 | FrogLine Shuttle with Karabiner | Details Page 55 |

*MGA = Marine Grade Aluminium

STANDING SEAM MOUNTED FROGLINE



- Permanent horizontal height safety lifeline system, designed to be mounted onto standing seam roof profile.
- Install using S5 Clamp Brackets, contact SafetyLink to find the bracket to suit your roof sheeting.
- Brackets clamp to the roof profile with no penetration to the roof sheeting for superior waterproofing.
- Suits pitches no greater than 25 degrees.
- Fitted where it is difficult to access the underside of the roof. Equipped with an engineered energy absorbing region to minimise loads on users and structures in the event of a fall.
- Continuous connection with 8mm stainless steel cable, utilising the FrogLine Shuttle System, up-to four users per system, two per span.

LIFELINES

Installation of any SafetyLink Lifeline Systems requires face to face training for manufacturer's accreditation.

The structure must be assessed by an engineer, unless it is clear to a competent person that the structure is adequate.

| Product Code | Description | Weight (kg) |
|--------------------------|---|-------------|
| STAT.FROGKSCF001+FIXINGS | FrogLine AL SurfaceLink Intermediate Anchor+FIXINGS | 3.109 |
| STAT.FROGKSCF002+FIXINGS | FrogLine AL SurfaceLink End Anchor+FIXINGS | 3.123 |
| STAT.FROGKSCF003+FIXINGS | FrogLine AL SurfaceLink Corner Anchor+FIXINGS | 3.186 |



Surface Mounted END Anchor (S5 Brackets)



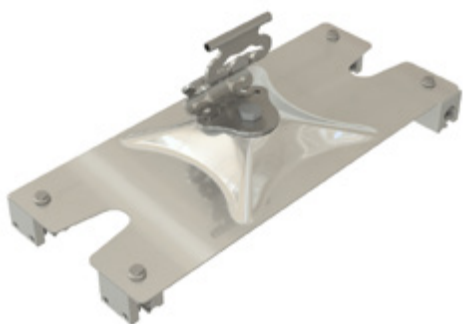
End anchor designed to be mounted on standing seam roof profiles where access to structure is difficult or roof penetrations are not permitted.

Permanent horizontal lifeline system as attachment points for the cable to start and terminate at.

PRODUCT CODE: STAT.FROGKSCF002+FIXINGS

| Components | Description | Material | Qty |
|---------------------|------------------------------------|----------|-----|
| FROGLINE END | FrogLine Base End | 316SS | 1 |
| BOLT-M16x35mm-SS | Bolt: M16x35mm Set Screw | 316SS | 1 |
| WASHER 70od-Plastic | Washer: 70mm OD | Plastic | 2 |
| ADV-PLATE-AL-SIZE | SurfaceLink Plate (Plate Selector) | *MGA | 1 |
| WASHER 70od-SS | Washer: 70mm O.D. | 316SS | 1 |
| NUT M16 | Nut: M16 | 316SS | 1 |
| S5_?_BRACKET | S5 Clamp (ADIVSE TYPE) | Alum/SS | 4 |

Surface Mounted INTERMEDIATE Anchor (S5 Brackets)



Intermediate anchor designed to be mounted on standing seam roof profiles where access to structure is difficult or roof penetrations are not permitted.

Permanent horizontal lifeline system to limit lifeline span distances.

PRODUCT CODE: STAT.FROGKSCF001+FIXINGS

| Components | Description | Material | Qty |
|---------------------|------------------------------------|----------|-----|
| FROGLINE INT | FrogLine Base Intermediate | 316SS | 1 |
| BOLT-M16x35mm-SS | Bolt: M16x35mm Set Screw | 316SS | 1 |
| WASHER 70od-Plastic | Washer: 70mm OD | Plastic | 2 |
| ADV-PLATE-AL-SIZE | SurfaceLink Plate (Plate Selector) | *MGA | 1 |
| WASHER 70od-SS | Washer: 70mm OD | 316SS | 1 |
| NUT M16 | Nut: M16 | 316SS | 1 |
| S5_?_BRACKET | S5 Clamp (ADIVSE TYPE) | Alum/SS | 4 |

Surface Mounted CORNER Anchor (S5 Brackets)



Corner anchor designed to be mounted on standing seam roof profiles where access to structure is difficult or roof penetrations are not permitted.

The lifeline cable runs through the corner anchor point re-directing it by up to 90 degrees.

PRODUCT CODE: STAT.FROGKSCF003+FIXINGS

| Components | Description | Material | Qty |
|---------------------|------------------------------------|----------|-----|
| FROGLINE CNR | FrogLine Base Corner | 316SS | 1 |
| BOLT-M16x35mm-SS | Bolt: M16x35mm Set Screw | 316SS | 1 |
| WASHER 70od-Plastic | Washer: 70mm OD | Plastic | 2 |
| ADV-PLATE-AL-SIZE | SurfaceLink Plate (Plate Selector) | *MGA | 1 |
| WASHER 70od-SS | Washer: 70mm OD | 316SS | 1 |
| NUT M16 | Nut: M16 | 316SS | 1 |
| S5_?_BRACKET | S5 Clamp (ADIVSE TYPE) | Alum/SS | 4 |

Accessories Required for Complete Lifeline

| | | |
|-----------|---|-----------------|
| 1 | Tensioner with Tension Indicator (Swaged/Swageless/Crimped) | Details Page 53 |
| 1 | Termination (Swaged/Swageless/Crimped) | Details Page 53 |
| Per Metre | Cable: 8mm diameter, 7x7 wire rope, 316 Stainless Steel | Details Page 52 |
| 1 | FrogLine Shuttle with Karabiner | Details Page 55 |

*MGA = Marine Grade Aluminium

PURLIN MOUNTED RETRO FROGLINE



LIFELINES

Installation of any SafetyLink Lifeline Systems requires face to face training for manufacturer's accreditation.

The structure must be assessed by an engineer, unless it is clear to a competent person that the structure is adequate.

- Permanent horizontal height safety lifeline system, designed to be mounted onto metal purlins through various metal roof sheeting profiles.
- For extra height install with Extension Piece.
- Suits pitches no greater than 25 degrees on a multitude of roof profiles.
- Equipped with an engineered energy absorbing region to minimise loads on users and structures in the event of a fall.
- Continuous connection with 8mm stainless steel cable, utilising the FrogLine Shuttle System, up-to four users per system, two per span.

| Product Code | Description | Weight (kg) |
|--|---|-------------|
| STAT.FROGRET001 | Lifeline RetroLink Intermediate Anchor | 0.971 |
| STAT.FROGRET002 | Lifeline RetroLink End Anchor | 0.985 |
| STAT.FROGRET003 | Lifeline RetroLink Corner Anchor | 1.048 |
| STAT.FROGRET008 | Lifeline RetroLink Intermediate Extended Anchor | 1.117 |
| <i>Extensions are used when extra height is required - lengths available 35mm, 55mm and 90mm</i> | | |
| STAT.FROGRET001_EXT | Lifeline RetroLink Intermediate Anchor with 35mm Extension | 1.784 |
| STAT.FROGRET002_EXT | Lifeline RetroLink End Anchor with 35mm Extension | 1.798 |
| STAT.FROGRET003_EXT | Lifeline RetroLink Corner Anchor with 35mm Extension | 1.861 |
| STAT.FROGRET008_EXT | Lifeline RetroLink Intermediate Extended Anchor with 35mm Extension | 1.930 |



Retro END Anchor



End anchor designed to be mounted into metal purlin construction with various metal roof profiles as attachment points for the cable to start and terminate at.

- Drill a 25mm hole.

PRODUCT CODE: STAT.FROGRET002

| Components | Description | Material | Qty |
|------------------|--------------------------|----------|-----|
| FROGLINE END | FrogLine Base End | 316SS | 1 |
| BOLT-M16x90mm-SS | Bolt: M16 90mm Set Screw | 316SS | 1 |
| O-RING | O-Ring | Rubber | 1 |
| WASHER M20 | Washer: M20 | 316SS | 1 |
| WASHER 700D-Foam | Foam Washer: 700D | Foam | 1 |
| RETRO-TUBE | Retro Tube with Tie | 316SS | 1 |

Retro INTERMEDIATE Anchor



Intermediate anchor designed to be mounted into metal purlin construction with various metal roof profiles, to limit lifeline span distances.

- Drill a 25mm hole.

PRODUCT CODE: STAT.FROGRET001

| Components | Description | Material | Qty |
|------------------|----------------------------|----------|-----|
| FROGLINE INT | FrogLine Base Intermediate | 316SS | 1 |
| BOLT-M16x90mm-SS | Bolt: M16 90mm Set Screw | 316SS | 1 |
| O-RING | O-Ring | Rubber | 1 |
| WASHER M20 | Washer: M20 | 316SS | 1 |
| WASHER 700D-Foam | Foam Washer: 700D | Foam | 1 |
| RETRO-TUBE | Retro Tube with Tie | 316SS | 1 |

Retro EXTENDED INTERMEDIATE Anchor



Intermediate anchor designed to be mounted into metal purlin construction with various metal roof profiles, to limit lifeline span distances.

Longer tube to enable bending to suit small degree changes in the line.

PRODUCT CODE: STAT.FROGRET008

| Components | Description | Material | Qty |
|------------------|-------------------------------------|----------|-----|
| FROGLINE INT_EXT | FrogLine Base Intermediate Extended | 316SS | 1 |
| BOLT-M16x90mm-SS | Bolt: M16 90mm Set Screw | 316SS | 1 |
| O-RING | O-Ring | Rubber | 1 |
| WASHER M20 | Washer: M20 | 316SS | 1 |
| WASHER 700D-Foam | Foam Washer: 700D | Foam | 1 |
| RETRO-TUBE | Retro Tube with Tie | 316SS | 1 |

Retro CORNER Anchor



Corner anchor designed to be mounted into metal purlin construction with various metal roof profiles. The lifeline cable runs through the corner anchor point re-directing it by up to 90 degrees.

- Drill a 25mm hole.

PRODUCT CODE: STAT.FROGRET003

| Components | Description | Material | Qty |
|------------------|--------------------------|----------|-----|
| FROGLINE CNR | FrogLine Base Corner | 316SS | 1 |
| BOLT-M16x90mm-SS | Bolt: M16 90mm Set Screw | 316SS | 1 |
| O-RING | O-Ring | Rubber | 1 |
| WASHER M20 | Washer: M20 | 316SS | 1 |
| WASHER 700D-Foam | Foam Washer: 700D | Foam | 1 |
| RETRO-TUBE | Retro Tube with Tie | 316SS | 1 |

Accessories Required for Complete Lifeline

| | | |
|-----------|---|-----------------|
| 1 | Tensioner with Tension Indicator (Swaged/Swageless/Crimped) | Details Page 53 |
| 1 | Termination (Swaged/Swageless/Crimped) | Details Page 53 |
| Per Metre | Cable: 8mm diameter, 7x7 wire rope, 316 Stainless Steel | Details Page 52 |
| 1 | FrogLine Shuttle with Karabiner | Details Page 55 |

CONCRETE MOUNTED FROGLINE



- Permanent horizontal height safety lifeline system, designed to be mounted into concrete structure.
- Concrete Insert must be chemically fastened.
- FrogLine Bolts installed as part of the FrogLine Concrete Lifeline allows easy proof load testing to be completed without the need to remove any components from the system.
- Equipped with an engineered energy absorbing region to minimise loads on users and structures in the event of a fall.
- Continuous connection with 8mm stainless steel cable, utilising the FrogLine Shuttle System, up-to four users per system, two per span.

LIFELINES

Installation of any SafetyLink Lifeline Systems requires face to face training for manufacturer's accreditation.

The structure must be assessed by an engineer, unless it is clear to a competent person that the structure is adequate.

| Product Code | Description | Weight (kg) |
|-----------------|--|-------------|
| STAT.FROGCON001 | Lifeline Concrete Intermediate Anchor | 1.021 |
| STAT.FROGCON002 | Lifeline Concrete End Anchor | 1.035 |
| STAT.FROGCON003 | Lifeline Concrete Corner Anchor | 1.098 |
| STAT.FROGCON008 | Lifeline Concrete Intermediate Extended Anchor | 1.167 |





Concrete Mounted END Anchor



End anchor designed to be mounted into a concrete structure as attachment points for the cable to start and terminate at.

- Chemically anchored into concrete.
- Drill a 28mm hole to a depth of 90mm.

PRODUCT CODE: STAT.FROGCON002

| Components | Description | Material | Qty |
|---------------|------------------------------|----------|-----|
| FROGLINE END | FrogLine Base End | 316SS | 1 |
| FROGLINE BOLT | FrogLine Eyebolt M16 35mm | 316SS | 1 |
| CON-INSERT | ConcreteLink Insert M16 90mm | 316SS | 1 |

Concrete Mounted INTERMEDIATE Anchor



Intermediate anchor designed to limit lifeline span distances.

- Chemically anchored into concrete.
- Drill a 28mm hole to a depth of 90mm.

PRODUCT CODE: STAT.FROGCON001

| Components | Description | Material | Qty |
|---------------|------------------------------|----------|-----|
| FROGLINE INT | FrogLine Base Intermediate | 316SS | 1 |
| FROGLINE BOLT | FrogLine Eyebolt M16 35mm | 316SS | 1 |
| CON-INSERT | ConcreteLink Insert M16 90mm | 316SS | 1 |

Concrete Mounted EXTENDED INTERMEDIATE Anchor



Intermediate anchor designed to limit lifeline span distances. Longer tube to enable bending to suit small degree changes in the line.

- Chemically anchored into concrete.
- Drill a 28mm hole to a depth of 90mm.

PRODUCT CODE: STAT.FROGCON008

| Components | Description | Material | Qty |
|------------------|-------------------------------------|----------|-----|
| FROGLINE INT_EXT | FrogLine Base Intermediate Extended | 316SS | 1 |
| FROGLINE BOLT | FrogLine Eyebolt M16 35mm | 316SS | 1 |
| CON-INSERT | ConcreteLink Insert M16 90mm | 316SS | 1 |

Concrete Mounted CORNER Anchor



Corner anchor designed to re-direct cable by up to 90 degrees.

- Chemically anchored into concrete.
- Drill a 28mm hole to a depth of 90mm.

PRODUCT CODE: STAT.FROGCON003

| Components | Description | Material | Qty |
|---------------|------------------------------|----------|-----|
| FROGLINE CNR | FrogLine Base Corner | 316SS | 1 |
| FROGLINE BOLT | FrogLine Eyebolt M16 35mm | 316SS | 1 |
| CON-INSERT | ConcreteLink Insert M16 90mm | 316SS | 1 |

Accessories Required for Complete Lifeline

| | | |
|-----------|---|-----------------|
| 1 | Tensioner with Tension Indicator (Swaged/Swageless/Crimped) | Details Page 53 |
| 1 | Termination (Swaged/Swageless/Crimped) | Details Page 53 |
| Per Metre | Cable: 8mm diameter, 7x7 wire rope, 316 Stainless Steel | Details Page 52 |
| 1 | FrogLine Shuttle with Karabiner | Details Page 55 |

STEEL MOUNTED FROGLINE



LIFELINES

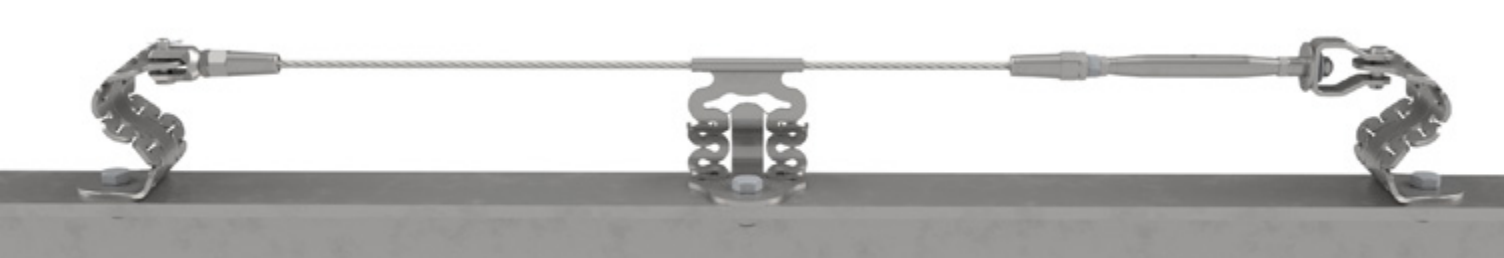
Installation of any SafetyLink Lifeline Systems requires face to face training for manufacturer's accreditation.

The structure must be assessed by an engineer, unless it is clear to a competent person that the structure is adequate.

- Permanent horizontal height safety lifeline system, designed to be mounted into steel construction.
- Suits pitches no greater than 25 degrees on a multitude of roof profiles.
- Equipped with an engineered energy absorbing region to minimise loads on users and structures in the event of a fall.
- Continuous connection with 8mm stainless steel cable, utilising the FrogLine Shuttle System, up-to four users per system, two per span.

| Product Code | Description | Weight (kg) |
|----------------|---|-------------|
| STAT.FROGST001 | Lifeline Steel Intermediate Anchor | 0.816 |
| STAT.FROGST002 | Lifeline Steel End Anchor | 0.830 |
| STAT.FROGST003 | Lifeline Steel Corner Anchor | 0.893 |
| STAT.FROGST008 | Lifeline Steel Intermediate Extended Anchor | 0.962 |





Steel Purlin END Anchor



End anchor designed to be mounted into steel structures as attachment points for the cable to start and terminate at.

- Drill a 17mm hole.

PRODUCT CODE: STAT.FROGSTE002

| Components | Description | Material | Qty |
|------------------|--------------------------|----------|-----|
| FROGLINE END | FrogLine Base End | 316SS | 1 |
| BOLT-M16x50mm-SS | Bolt: M16x50mm Set Screw | 316SS | 1 |
| WASHER M16 | Washer: M16 | 316SS | 1 |
| NUT M16 | Nut: M16 | 316SS | 1 |

Steel Purlin INTERMEDIATE Anchor



Intermediate anchor designed to be mounted into steel structures to limit lifeline span distances.

- Drill a 17mm hole.

PRODUCT CODE: STAT.FROGSTE001

| Components | Description | Material | Qty |
|------------------|----------------------------|----------|-----|
| FROGLINE INT | FrogLine Base Intermediate | 316SS | 1 |
| BOLT-M16x50mm-SS | Bolt: M16x50mm Set Screw | 316SS | 1 |
| WASHER M16 | Washer: M16 | 316SS | 1 |
| NUT M16 | Nut: M16 | 316SS | 1 |

Steel Purlin EXTENDED INTERMEDIATE Anchor



Intermediate anchor designed to be mounted into steel structures to limit lifeline span distances. Longer tube to enable bending to suit small degree changes in the line.

- Drill a 17mm hole.

PRODUCT CODE: STAT.FROGSTE008

| Components | Description | Material | Qty |
|------------------|-------------------------------------|----------|-----|
| FROGLINE INT_EXT | FrogLine Base Intermediate Extended | 316SS | 1 |
| BOLT-M16x50mm-SS | Bolt: M16x50mm Set Screw | 316SS | 1 |
| WASHER M16 | Washer: M16 | 316SS | 1 |
| NUT M16 | Nut: M16 | 316SS | 1 |

Steel Purlin CORNER Anchor



Corner anchor designed to be mounted into steel structures. The lifeline cable runs through the corner anchor point re-directing it by up to 90 degrees.

- Drill a 17mm hole.

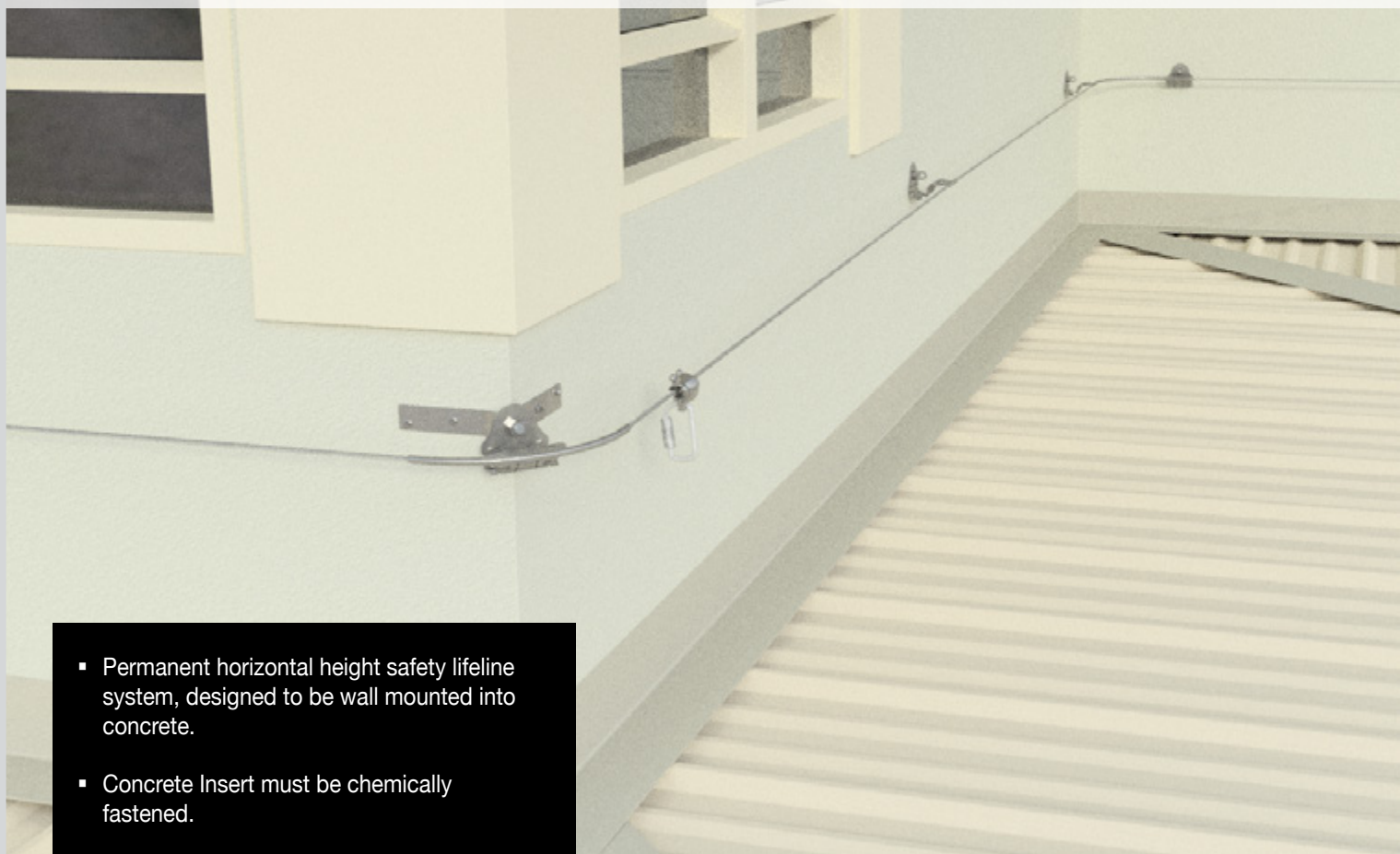
PRODUCT CODE: STAT.FROGSTE003

| Components | Description | Material | Qty |
|------------------|--------------------------|----------|-----|
| FROGLINE CNR | FrogLine Base Corner | 316SS | 1 |
| BOLT-M16x50mm-SS | Bolt: M16x50mm Set Screw | 316SS | 1 |
| WASHER M16 | Washer: M16 | 316SS | 1 |
| NUT M16 | Nut: M16 | 316SS | 1 |

Accessories Required for Complete Lifeline

| | | |
|-----------|---|-----------------|
| 1 | Tensioner with Tension Indicator (Swaged/Swageless/Crimped) | Details Page 53 |
| 1 | Termination (Swaged/Swageless/Crimped) | Details Page 53 |
| Per Metre | Cable: 8mm diameter, 7x7 wire rope, 316 Stainless Steel | Details Page 52 |
| 1 | FrogLine Shuttle with Karabiner | Details Page 55 |

CONCRETE MOUNTED WALL FROGLINE



- Permanent horizontal height safety lifeline system, designed to be wall mounted into concrete.
- Concrete Insert must be chemically fastened.
- FrogLine Bolts installed as part of the lifeline allows easy proof load testing to be completed without the need to remove any components from the system.
- Equipped with an engineered energy absorbing region to minimise loads on users and structures in the event of a fall.
- Continuous connection with 8mm stainless steel cable, utilising the FrogLine Shuttle System, up-to four users per system, two per span.

LIFELINES

Installation of any SafetyLink Lifeline Systems requires face to face training for manufacturer's accreditation.

The structure must be assessed by an engineer, unless it is clear to a competent person that the structure is adequate.

| Product Code | Description | Weight (kg) |
|---|----------------------------------|-------------|
| STAT.FROGCON002 | Concrete End Anchor | 1.035 |
| STAT.FROGCON001 | Concrete Intermediate Anchor | 1.021 |
| STAT.FROGCON006 | Concrete Corner Wall Anchor | 2.986 |
| Concrete Mounted (Internal) Corner Wall Anchor Components Below | | |
| STAT.FROGCON001 | Concrete Intermediate Anchor x 2 | 1.021 |
| CORNERTUBE90 | Corner Tube: 90 degrees | 0.179 |





Concrete Mounted END Anchor



End anchor designed to be mounted into a concrete wall structure as attachment points for the cable to start and terminate at.

- Chemically anchored into concrete.
- Drill a 28mm hole to a depth of 90mm.

PRODUCT CODE: STAT.FROGCON002

| Components | Description | Material | Qty |
|---------------|------------------------------|----------|-----|
| FROGLINE END | FrogLine Base End | 316SS | 1 |
| FROGLINE BOLT | FrogLine Eyebolt M16 35mm | 316SS | 1 |
| CON-INSERT | ConcreteLink Insert M16 90mm | 316SS | 1 |

Concrete Mounted INTERMEDIATE Anchor



Intermediate anchor designed to be mounted into a concrete wall structure, to limit lifeline span distances.

- Chemically anchored into concrete.
- Drill a 28mm hole to a depth of 90mm.

PRODUCT CODE: STAT.FROGCON001

| Components | Description | Material | Qty |
|---------------|------------------------------|----------|-----|
| FROGLINE INT | FrogLine Base Intermediate | 316SS | 1 |
| FROGLINE BOLT | FrogLine Eyebolt M16 35mm | 316SS | 1 |
| CON-INSERT | ConcreteLink Insert M16 90mm | 316SS | 1 |

Concrete Mounted (INTERNAL) CORNER WALL Anchor



Corner anchor designed to be mounted into a concrete wall. The lifeline cable runs through the corner tube re-directing it by up to 90 degrees.

- Chemically anchored into concrete.
- Drill a 28mm hole to a depth of 90mm.

| Product Code | Description | Material | Qty |
|-----------------|--------------------------------|----------|-----|
| STAT.FROGCON001 | FrogLine Concrete Intermediate | 316SS | 2 |
| CORNERTUBE90 | Corner Tube: 90 degrees | 316SS | 1 |

Concrete Mounted (EXTERNAL) CORNER WALL Anchor



Corner anchor designed to be mounted into a concrete wall as part of a horizontal lifeline system. The lifeline cable runs through the corner anchor point re-directing it by up to 90 degrees.

PRODUCT CODE: STAT.FROGCON006

| Components | Description | Material | Qty |
|-------------------------|--|----------|-----|
| FROGLINE CNR_WM | FrogLine Corner_WALL | 316SS | 1 |
| FROGLINE CNR_WM_BRACKET | FrogLine Corner_WALL Bracket(made to suit) | 316SS | 1 |
| BOLT-M16x35mm-SS | Bolt: M16x35mm Set Screw | 316SS | 1 |
| WASHER M16 | Washer: M16 | 316SS | 1 |
| NUT M16 | Nut: M16 | 316SS | 1 |
| FROGLINE BOLT | FrogLine Eyebolt M16 35mm | 316SS | 4 |
| CON-INSERT | ConcreteLink Insert M16 90mm | 316SS | 4 |

Accessories Required for Complete Lifeline

| | | |
|-----------|---|-----------------|
| 1 | Tensioner with Tension Indicator (Swaged/Swageless/Crimped) | Details Page 53 |
| 1 | Termination (Swaged/Swageless/Crimped) | Details Page 53 |
| Per Metre | Cable: 8mm diameter, 7x7 wire rope, 316 Stainless Steel | Details Page 52 |
| 1 | Overhead Shuttle with Karabiner | Details Page 55 |

STEEL MOUNTED WALL FROGLINE



LIFELINES

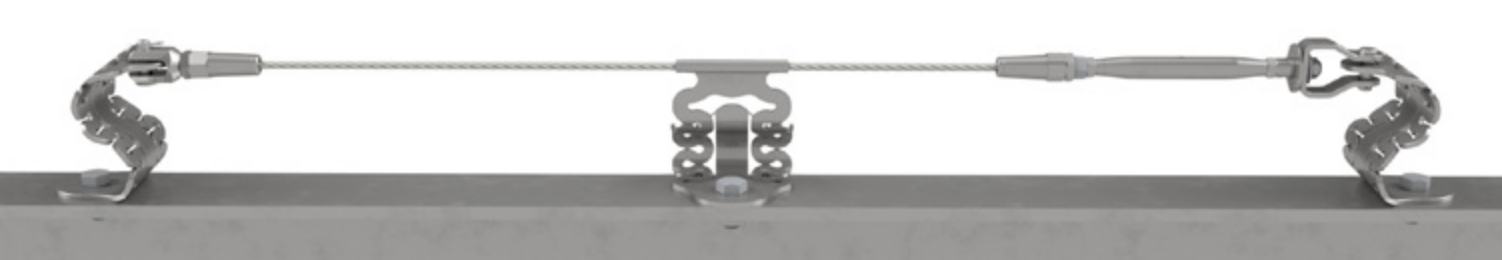
Installation of any SafetyLink Lifeline Systems requires face to face training for manufacturer's accreditation.

The structure must be assessed by an engineer, unless it is clear to a competent person that the structure is adequate.

- Permanent horizontal height safety lifeline system, designed to be wall mounted onto steel purlin construction.
- Equipped with an engineered energy absorbing region to minimise loads on users and structures in the event of a fall.
- Continuous connection with 8mm stainless steel cable, utilising the FrogLine Shuttle System, up-to four users per system, two per span.

| Product Code | Description | Weight (kg) |
|-----------------|---|-------------|
| STAT.FROGSTE002 | Lifeline Steel Purlin End Anchor | 0.830 |
| STAT.FROGSTE001 | Lifeline Steel Purlin Intermediate Anchor | 0.847 |
| STAT.FROGSTE005 | Lifeline Steel Purlin Corner Wall Anchor | 1.618 |





Steel Purlin END Anchor



End anchor designed to be mounted into steel structures as part of a wall mounted horizontal lifeline system.

- End anchor attachment points for the cable to start and terminate at.
- Drill a 17mm hole.

PRODUCT CODE: STAT.FROGSTE002

| Components | Description | Material | Qty |
|------------------|--------------------------|----------|-----|
| FROGLINE END | FrogLine Base End | 316SS | 1 |
| BOLT-M16x50mm-SS | Bolt: M16x50mm Set Screw | 316SS | 1 |
| WASHER M16 | Washer: M16 | 316SS | 1 |
| NUT M16 | Nut: M16 | 316SS | 1 |

Steel Purlin INTERMEDIATE Anchor



Intermediate anchor designed to be mounted onto steel purlin construction as part of a wall mounted horizontal lifeline system.

- To limit lifeline span distances.
- Drill a 17mm hole.

PRODUCT CODE: STAT.FROGSTE001

| Components | Description | Material | Qty |
|------------------|----------------------------|----------|-----|
| FROGLINE INT | FrogLine Base Intermediate | 316SS | 1 |
| BOLT-M16x50mm-SS | Bolt: M16x50mm Set Screw | 316SS | 1 |
| WASHER M16 | Washer: M16 | 316SS | 1 |
| NUT M16 | Nut: M16 | 316SS | 1 |

Steel Purlin CORNER WALL Anchor



Corner anchor designed to be mounted onto steel purlin structures as part of a wall mounted horizontal lifeline system.

- The lifeline cable runs through the corner anchor point re-directing it by up to 90 degrees.

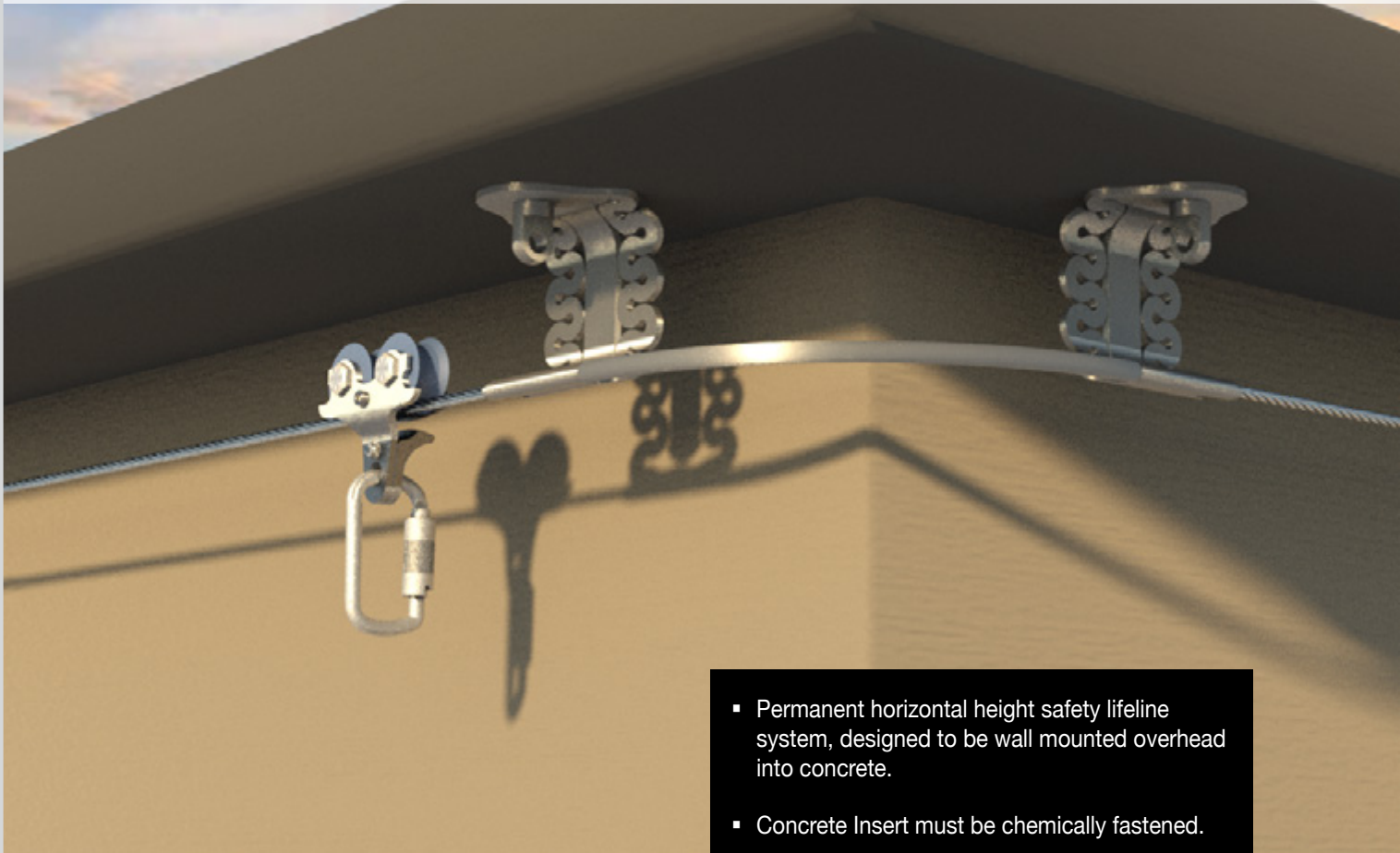
PRODUCT CODE: STAT.FROGSTE005

| Components | Description | Material | Qty |
|--|--|----------|-----|
| FROGLINE CNR_WM | FrogLine Base Corner WALL | 316SS | 1 |
| FROGLINE CNR_WM_BRACKET | FrogLine Base Corner WALL BRACKET (made to suit) | 316SS | 1 |
| BOLT-M16x50mm-SS | Bolt: M16x50mm Set Screw | 316SS | 1 |
| WASHER M16 | Washer: M16 | 316SS | 1 |
| NUT M16 | Nut: M16 | 316SS | 1 |
| FIXINGS REQUIRED TO INSTALL TO STRUCTURE | | | |

Accessories Required for Complete Lifeline

| | | |
|-----------|---|-----------------|
| 1 | Tensioner with Tension Indicator (Swaged/Swageless/Crimped) | Details Page 53 |
| 1 | Termination (Swaged/Swageless/Crimped) | Details Page 53 |
| Per Metre | Cable: 8mm diameter, 7x7 wire rope, 316 Stainless Steel | Details Page 52 |
| 1 | Overhead Shuttle with Karabiner | Details Page 55 |

CONCRETE MOUNTED OVERHEAD FROGLINE



LIFELINES

Installation of any SafetyLink Lifeline Systems requires face to face training for manufacturer's accreditation.

The structure must be assessed by an engineer, unless it is clear to a competent person that the structure is adequate.

- Permanent horizontal height safety lifeline system, designed to be wall mounted overhead into concrete.
- Concrete Insert must be chemically fastened.
- FrogLine Bolts installed as part of the FrogLine Concrete Lifeline allows easy proof load testing to be completed without the need to remove any components from the system.
- Equipped with an engineered energy absorbing region to minimise loads on users and structures in the event of a fall.
- Continuous connection with 8mm stainless steel cable, utilising the FrogLine Shuttle System, up-to four users per system, two per span.

| Product Code | Description | Weight (kg) |
|--|--|-------------|
| STAT.FROGCON002 | Concrete End Anchor | 1.035 |
| STAT.FROGCON004 | Concrete Overhead Intermediate Anchor | 1.052 |
| STAT.SHUTL002 | Overhead Shuttle with Karabiner | 0.791 |
| Concrete Mounted Overhead Corner Anchor Components Below | | |
| STAT.FROGCON004 | Concrete Overhead Intermediate Anchors x 2 | 1.052 |
| CORNERTUBE90 | Corner Tube: 90 degrees | 0.179 |



Concrete Mounted END Anchor



End anchor designed to be mounted into a concrete overhead structure as attachment points for the cable to start and terminate at.

- Chemically anchored into concrete.
- Drill a 28mm hole to a depth of 90mm.

PRODUCT CODE: STAT.FROGCON002

| Components | Description | Material | Qty |
|---------------|------------------------------|----------|-----|
| FROGLINE END | FrogLine Base End | 316SS | 1 |
| FROGLINE BOLT | FrogLine Eyebolt M16 35mm | 316SS | 1 |
| CON-INSERT | ConcreteLink Insert M16 90mm | 316SS | 1 |

Concrete Mounted OVERHEAD INTERMEDIATE Anchor



Intermediate anchor designed to be mounted into a concrete overhead structure to limit lifeline span distances.

- Chemically anchored into concrete.
- Drill a 28mm hole to a depth of 90mm.

PRODUCT CODE: STAT.FROGCON004

| Components | Description | Material | Qty |
|-----------------|-------------------------------------|----------|-----|
| FROGLINE INT_OH | FrogLine Base Overhead Intermediate | 316SS | 1 |
| FROGLINE BOLT | FrogLine Eyebolt M16 35mm | 316SS | 1 |
| CON-INSERT | ConcreteLink Insert M16 90mm | 316SS | 1 |

Concrete Mounted OVERHEAD CORNER Anchor



Corner anchor designed to be mounted into a concrete overhead structure. The lifeline cable runs through the corner tube re-directing it by up to 90 degrees.

- Chemically anchored into concrete.
- Drill a 28mm hole to a depth of 90mm.

| Product Code | Description | Material | Qty |
|-----------------|---|----------|-----|
| STAT.FROGCON004 | FrogLine Concrete Intermediate Overhead | 316SS | 2 |
| CORNERTUBE90 | Corner Tube: 90 degrees | 316SS | 1 |

Overhead Lifeline Shuttle



- For use on SafetyLink OVERHEAD Lifeline Systems.
- No need to disconnect from Lifeline as it passes easily over Intermediate anchor points.
- Shuttle: Stainless Steel construction with Nylon Wheels.
- Karabiner - Alloy steel, silver zinc plated.
- Suits 8mm Cable.

PRODUCT CODE: STAT.SHUTL002

| Components | Description | Material | Qty |
|------------------|---------------------------------|-------------|-----|
| STAT.SHUTL002.01 | OVERHEAD Shuttle (Nylon Wheels) | 316SS | 1 |
| KARBNR015 | SafetyLink Karabiner | Zinc Plated | 1 |

Accessories Required for Complete Lifeline

| | | |
|-----------|---|-----------------|
| 1 | Tensioner with Tension Indicator (Swaged/Swageless/Crimped) | Details Page 53 |
| 1 | Termination (Swaged/Swageless/Crimped) | Details Page 53 |
| Per Metre | Cable: 8mm diameter, 7x7 wire rope, 316 Stainless Steel | Details Page 52 |
| 1 | Overhead Shuttle with Karabiner | Details Page 55 |

STEEL MOUNTED OVERHEAD FROGLINE



LIFELINES

Installation of any SafetyLink Lifeline Systems requires face to face training for manufacturer's accreditation.

The structure must be assessed by an engineer, unless it is clear to a competent person that the structure is adequate.

- Permanent horizontal height safety lifeline system, designed to be mounted overhead onto steel purlin construction.
- Equipped with an engineered energy absorbing region to minimise loads on users and structures in the event of a fall.
- Continuous connection with 8mm stainless steel cable, utilising the FrogLine Shuttle System, up-to four users per system, two per span.

| Product Code | Description | Weight (kg) |
|----------------|--|-------------|
| STAT.FROGST002 | Lifeline Steel Purlin End Anchor | 0.830 |
| STAT.FROGST004 | Lifeline Steel Purlin Overhead Intermediate Anchor | 0.847 |
| STAT.SHUTL002 | Overhead Lifeline Shuttle with Karabiner | 0.791 |



Steel Purlin END Anchor



End anchor designed to be mounted into steel structures as part of a overhead horizontal lifeline system.

- End anchor attachment points for the cable to start and terminate at.
- Drill a 17mm hole.

PRODUCT CODE: STAT.FROGSTEO02

| Components | Description | Material | Qty |
|------------------|--------------------------|----------|-----|
| FROGLINE END | FrogLine Base End | 316SS | 1 |
| BOLT-M16x50mm-SS | Bolt: M16x50mm Set Screw | 316SS | 1 |
| WASHER M16 | Washer: M16 | 316SS | 1 |
| NUT M16 | Nut: M16 | 316SS | 1 |

Steel Purlin INTERMEDIATE OVERHEAD Anchor



Intermediate anchor designed to be mounted into steel structure as part of an overhead horizontal lifeline system.

- To limit lifeline span distances.
- Drill a 17mm hole.

PRODUCT CODE: STAT.FROGSTEO04

| Components | Description | Material | Qty |
|------------------|--------------------------------|----------|-----|
| FROGLINE INT_OH | FrogLine Intermediate Overhead | 316SS | 1 |
| BOLT-M16x50mm-SS | Bolt: M16x50mm Set Screw | 316SS | 1 |
| WASHER M16 | Washer: M16 | 316SS | 1 |
| NUT M16 | Nut: M16 | 316SS | 1 |

Overhead Lifeline Shuttle



- For use on SafetyLink OVERHEAD Lifeline Systems.
- No need to disconnect from Lifeline as it passes easily over Intermediate anchor points.
- Shuttle: Stainless Steel construction, with Nylon Wheels.
- Karabiner - Alloy steel, silver zinc plated.
- Suits 8mm Cable.

PRODUCT CODE: STAT.SHUTL002

| Components | Description | Material | Qty |
|------------------|---------------------------------|-------------|-----|
| STAT.SHUTL002.01 | OVERHEAD Shuttle (Nylon Wheels) | 316SS | 1 |
| KARBNR015 | SafetyLink Karabiner | Zinc Plated | 1 |

Accessories Required for Complete Lifeline

| | | |
|-----------|---|-----------------|
| 1 | Tensioner with Tension Indicator (Swaged/Swageless/Crimped) | Details Page 53 |
| 1 | Termination (Swaged/Swageless/Crimped) | Details Page 53 |
| Per Metre | Cable: 8mm diameter, 7x7 wire rope, 316 Stainless Steel | Details Page 52 |
| 1 | Overhead Shuttle with Karabiner | Details Page 55 |

‘Innovative Fall Protection’

SafetyLink’s horizontal lifeline systems make traversing along lifelines simple and easy, eliminating the need to disconnect from the line, our intermediate and corners are designed so our innovative shuttles can glide freely.



FrogLine Video



LIFELINE FITTINGS

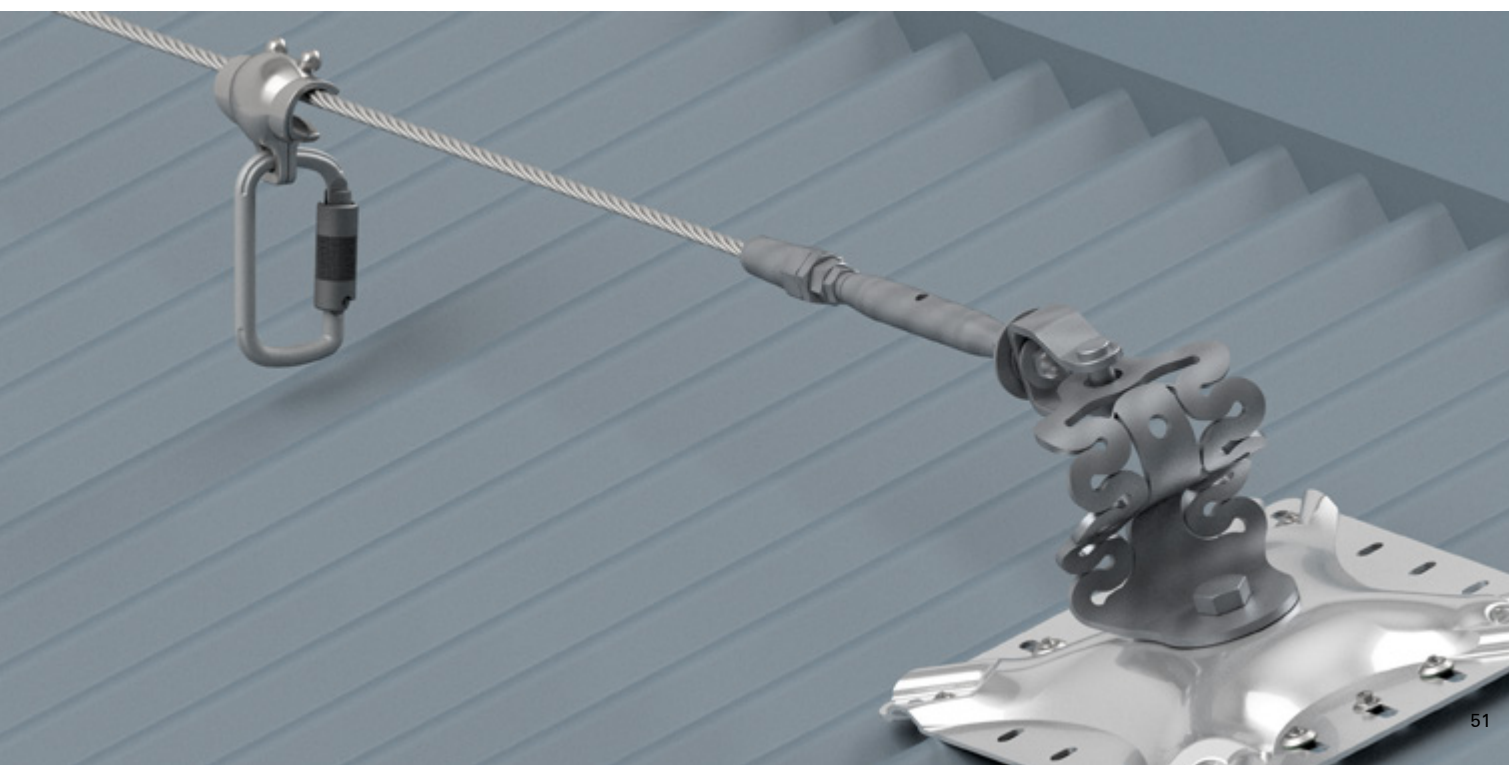
The FrogLine lifelines low profile design combines effortless energy absorbing capabilities into every intermediate, end and corner anchor, consequently incorporating the line energy absorbers into the system. This inventive approach ensures our FrogLine lifeline systems are always installed with the maximum energy absorption possible regardless of the horizontal line length.

- Patented low profile design.
- Fast simplified installation.
- Advanced shock absorbing serpentine.
- Innovative built in fall indicators.
- Solid 316 stainless steel components.
- Quick connect shuttle.
- Smooth transition over intermediates.

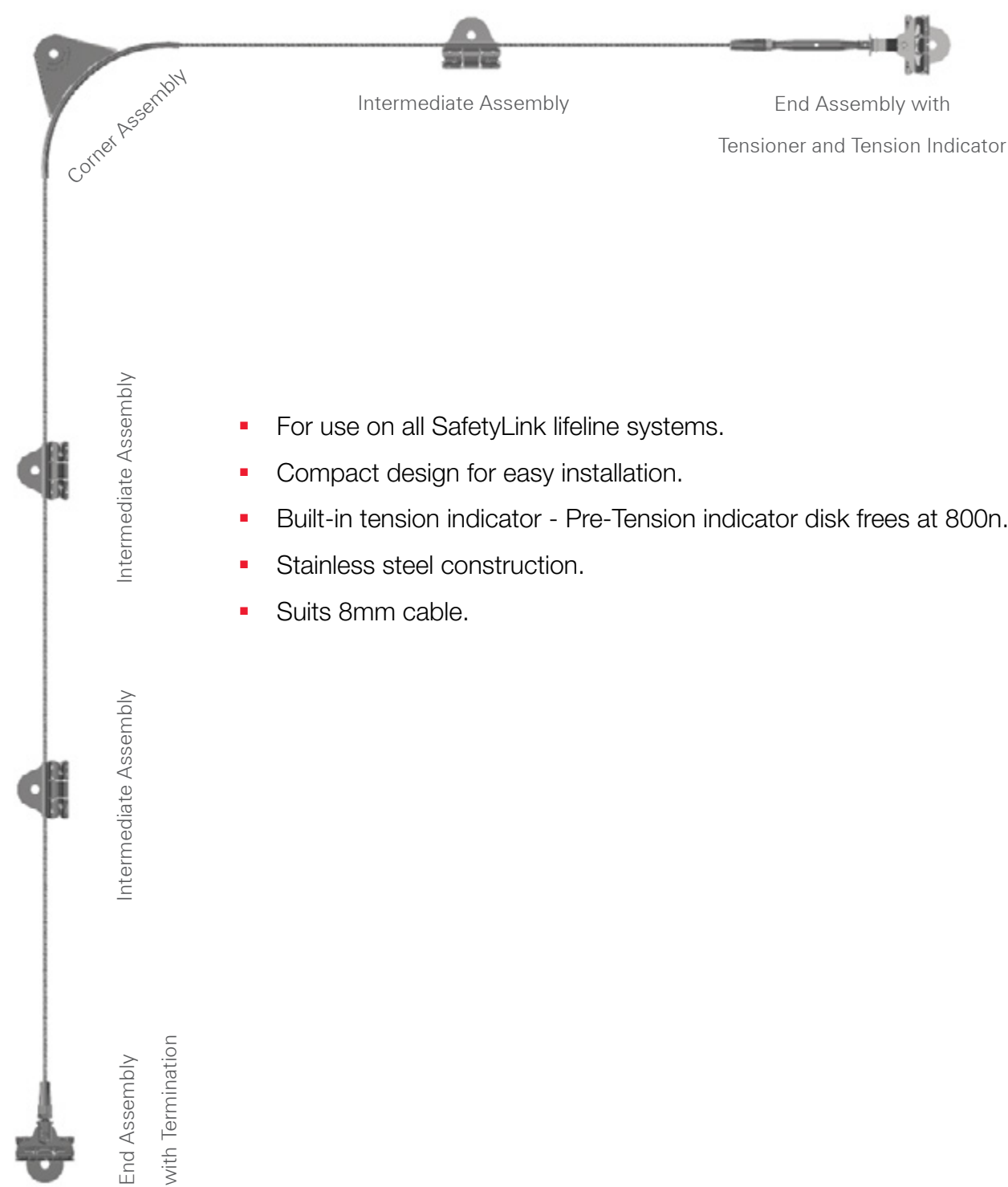
Shuttles/ Fittings

SafetyLink will provide you with the following:

- Supply a large range of anchors points that protect workers from the ground up.
- All products tested and manufactured to current Standards.
- Access to online training modules 24/7.
- Supply of installation guides and product data sheets.
- Assisted system design, layout and advice.
- Extensive technical support with collectively over 100 years of experience in the height safety industry.

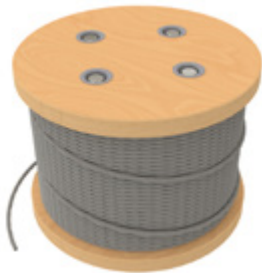


SAFETYLINK LIFELINE TERMINALS



- For use on all SafetyLink lifeline systems.
- Compact design for easy installation.
- Built-in tension indicator - Pre-Tension indicator disk frees at 800n.
- Stainless steel construction.
- Suits 8mm cable.

Cable



- For use on SafetyLink Lifeline Systems.
- 316 Stainless steel cable.
- 8mm diameter.
- 7 x 7 and 7 x 19 wire rope.

| Product Code | Description | Material | Qty | Weight (kg) |
|------------------------|---------------------------------|----------|-----|-------------|
| STAT.CABLE001 | Cable: 8mm 7x7, per metre | 316SS | 1 | 0.260 |
| STAT.CABLE001.01 | Roll Cable: 8mm 7x7, 305 metres | 316SS | 1 | 83 |
| STAT.CABLE_8mm_7x19_SS | Cable: 8mm 7x19, per metre | 316SS | 1 | 0.260 |

SWAGELESS Terminals



- Swageless Terminals.
- Do not reuse jaws or house, contact SafetyLink to replace.
- Easy installation.

| Product Code | Description | Material | Qty | Weight (kg) |
|---------------|--|----------|-----|-------------|
| STAT.TERMN002 | Swageless Termination | 316SS | 1 | 0.362 |
| STAT.TENSR002 | Swageless Tensioner | 316SS | 1 | 0.629 |
| STAT.TENSR004 | Swageless Tensioner with Tension Indicator | 316SS | 1 | 0.815 |

CRIMP ON Terminals



- Crimp On Terminals.
- Easy installation with battery powered crimping tool.

| Product Code | Description | Material | Qty | Weight (kg) |
|---------------|---------------------------------------|----------|-----|-------------|
| STAT.TERMN003 | Crimped Termination | 316SS | 1 | 0.174 |
| STAT.TENSR003 | Crimped Tensioner | 316SS | 1 | 0.499 |
| STAT.TENSR005 | Crimped Tensioner & Tension Indicator | 316SS | 1 | 0.679 |

SWAGED Terminals



- Swaged Terminals.
- Installation requires a Roll Swaging Machine.

| Product Code | Description | Material | Qty | Weight (kg) |
|---------------|---|----------|-----|-------------|
| STAT.TERMN001 | Swaged Termination | 316SS | 1 | 0.236 |
| STAT.TENSR001 | Swaged Tensioner | 316SS | 1 | 0.551 |
| STAT.TENSR007 | Swaged Tensioner with Tension Indicator | 316SS | 1 | 0.737 |

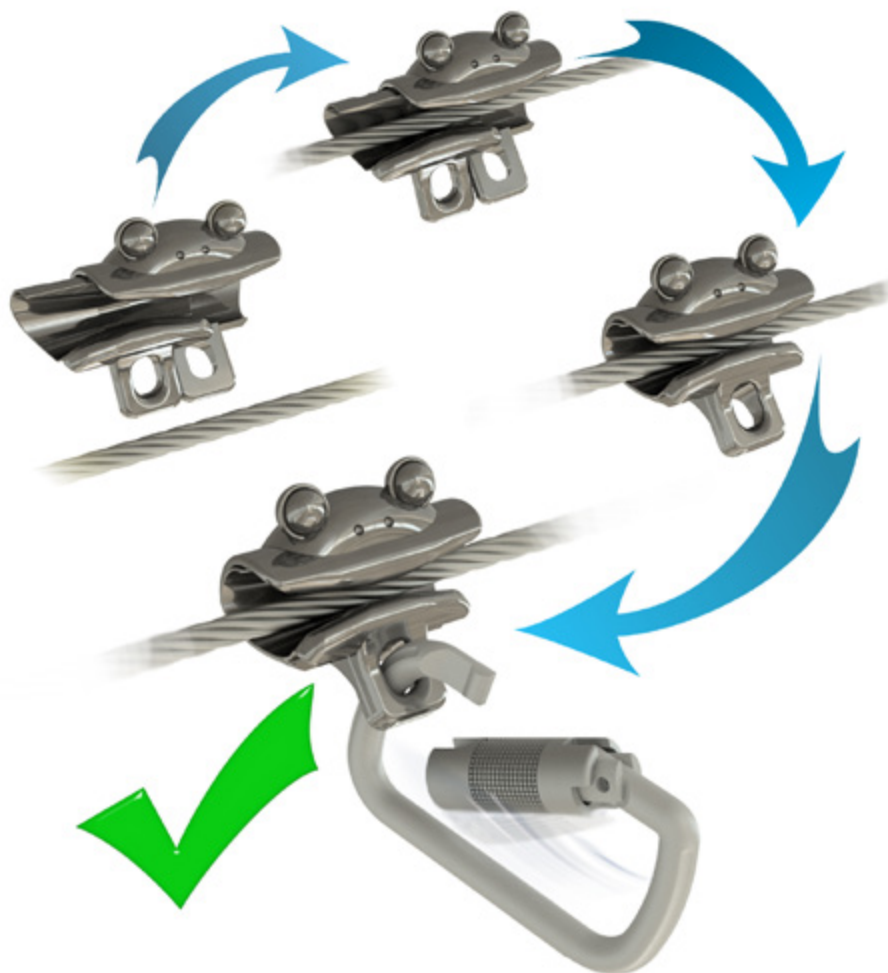
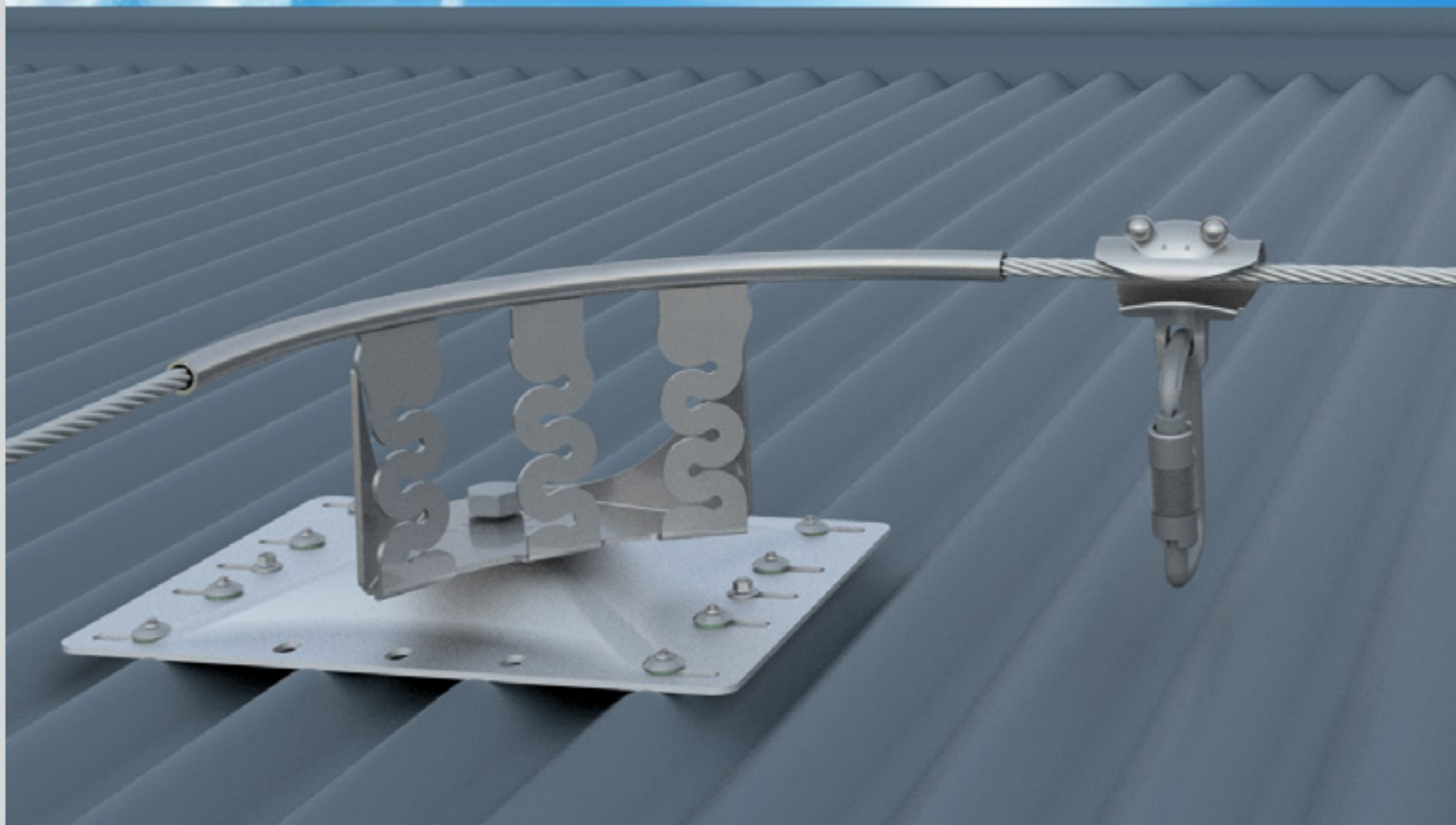
Cable Connector



- Cable Connector used to join 8mm cable on long lifelines.
- Installation requires battery crimping tool.

| Product Code | Description | Material | Qty | Weight (kg) |
|--------------|--------------------|----------|-----|-------------|
| STAT.CABJOIN | SS Cable Connector | 316SS | 1 | 0.125 |

LIFELINE SHUTTLES





Horizontal Lifeline Shuttle



- For use on SafetyLink **HORIZONTAL** Lifeline Systems.
- No need to disconnect from Lifeline as it passes easily over Intermediate anchor points.
- Suits pitches up-to 25 degrees.
- Must be used with included SafetyLink Karabiner.
- Suits 8mm Cable.

PRODUCT CODE: STAT.SHUTL003

| Components | Description | Material | Qty | Weight (kg) |
|------------------|----------------------|-------------|-----|-------------|
| STAT.SHUTL003.01 | FROGLINE Shuttle | 316SS | 1 | 0.401 |
| KARBNR015 | SafetyLink Karabiner | Zinc Plated | 1 | 0.163 |

Horizontal Overhead Lifeline Shuttle



- For use on SafetyLink horizontal **OVERHEAD** Lifeline Systems.
- No need to disconnect from Lifeline as it passes easily over Intermediate anchor points.
- Suits pitches up-to 25 degrees.
- Must be used with included SafetyLink Karabiner.
- Suits 8mm Cable.

PRODUCT CODE: STAT.SHUTL002

| Components | Description | Material | Qty | Weight (kg) |
|------------------|---------------------------------|-------------|-----|-------------|
| STAT.SHUTL002.01 | OVERHEAD Shuttle (Nylon Wheels) | 316SS | 1 | 0.628 |
| KARBNR015 | SafetyLink Karabiner | Zinc Plated | 1 | 0.163 |

Vertical Lifeline Shuttle with Karabiner



- For use on SafetyLink **VERTICAL** Lifeline Systems.
- Will track up or down with user vertically and self lock if a fall occurs.
- Can be installed/removed mid-line.
- For use on 8mm stainless steel or galvanised wire only.
- Must be used in conjunction with a personal energy absorber.
- Must be used with included SafetyLink Karabiner.

PRODUCT CODE: LADER001.10

| Components | Description | Material | Qty | Weight (kg) |
|----------------|----------------------|-------------|-----|-------------|
| LADER001.10.01 | Vertical Shuttle | 316SS | 1 | 0.482 |
| KARBNR015 | SafetyLink Karabiner | Zinc Plated | 1 | 0.163 |

‘Innovative Fall Protection’

SafetyLink's patented ladder stabilisers are an essential entry point to any height safety system.

The LadderLink stabilises your ladder preventing sideways movement and therefore holding your ladder safety in place and protecting the worker.

The Fixed LadderLink has been manufactured from marine grade aluminum, a durable light weight product for ease of installation.

SafetyLink have finished this product off with a protective membrane in the form of a powder coat finish, this ensures your product is ready for any additional colouring you would like to apply.



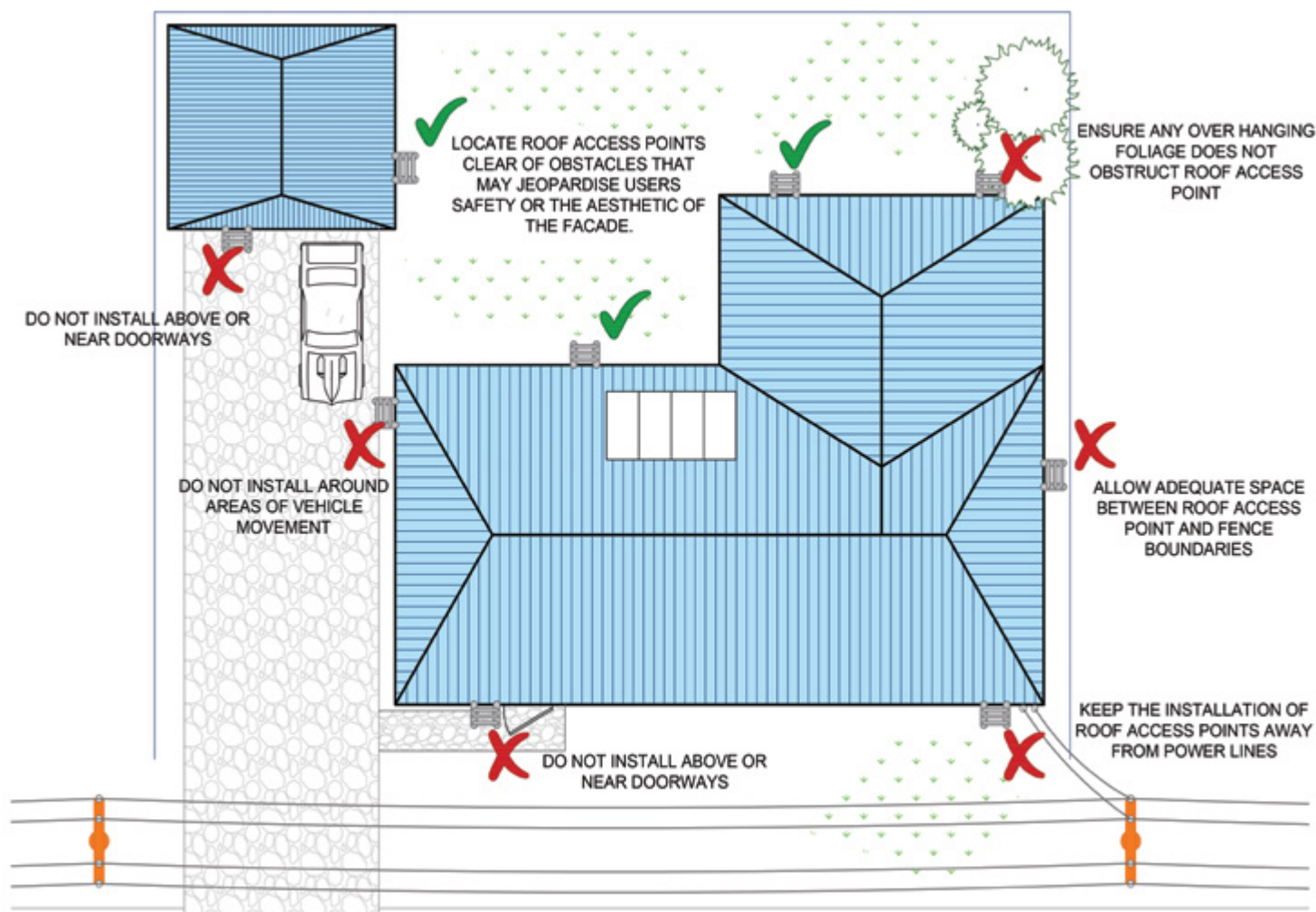
LadderLink Installation Video
on Tile Roof



LadderLink Installation Video
on Metal Roof

Roof





Access

SafetyLink manufactures Height Safety Anchor and Lifeline systems which provides restraint and fall arrest safety for all buildings and industrial sites, from a series of anchor points to a complete network of systems for maintenance, cleaning, access and inspections where working at heights.

In order to complete your height safety system SafetyLink stock:

- Ladder stabilisers brackets with ladder strap.
- Certification labels for individual anchor points.
- Warning signs with essential entry point information, providing dates of installation and certification of the height safety system.
- First man up stops.

LADDER ACCESS BRACKETS

- Essential entry point system to any height safety system, quick and easy installation.
- LadderLink stabilises your ladder preventing sideways movement and therefore holding your ladder in place.
- Adjusting the pitch of the LadderLink is to be done by a sheet metal fabricators bending machine.
- Protects gutters and barge capping.



Ladder Strap



- The Ladder Restraint Strap is to be used in conjunction with SafetyLink's Fixed LadderLink.
- Secure your ladder to the Fixed LadderLink ensuring the strap is tensioned and installed under the support cradle to prevent tripping hazards.
- WARNING: Not suitable for permanent outdoor installation.

| Product Code | Description | Material | Qty | Weight (kg) |
|--------------|--------------|----------|-----|-------------|
| LADFX009 | Ladder Strap | Webbing | 1 | 0.210 |

Facia Mounted LadderLink



- Facia mounted ladder bracket.
- Quick and easy installation.
- Essential entry point system to stabilise your ladder stopping sideways movement and therefore holding the ladder in place safely.
- In addition the LadderLink bracket has two tie off points to aid in securing the ladder in position.

| Product Code | Description | Material | Qty | Weight (kg) |
|--------------|---------------------------|----------|-----|-------------|
| LADFX008 | LadderLink: Facia Mounted | *MGA | 1 | 1.046g |

Rope Guide Bracket



- Guides your ropes and protects your ropes being damaged when **abseiling** over a sharp edge or gutter.
- One person user, easy to install and non-obtrusive.
- Protects the guttering systems from rope pressure and damage.
- Can be permanently installed or removed after use.
- Eyelets are not rated as anchor points.
- Eyelets for use with strap to contain abseil rope.

| Product Code | Description | Material | Qty | Weight (kg) |
|--------------|--------------------|----------|-----|-------------|
| LADFX007 | Rope Guide Bracket | *MGA | 1 | 3.415 |

*MGA = Marine Grade Aluminium



Fixed LadderLink



- Quick and easy installation, protects gutters.
- Essential entry point system to stabilise your ladder.
- In addition, the LadderLink bracket has two tie off points to aid in securing the ladder in position.
- Can be installed under or over roof sheets.

| Product Code | Description | Material | Qty | Weight (kg) |
|--------------|------------------|----------|-----|-------------|
| LADFX001 | Fixed LadderLink | *MGA | 1 | 2.290 |

Extended LadderLink



- To extend beyond box gutters and larger areas.
- 980mm gutter to end, overall length 1115mm.
- In addition the LadderLink bracket has two tie off points to aid in securing the ladder in position.
- Can be installed under or over roof sheets.

| Product Code | Description | Material | Qty | Weight (kg) |
|--------------|----------------------------|----------|-----|-------------|
| LADFX002 | Fixed LadderLink: Extended | *MGA | 1 | 6.600 |

Wall Mounted LadderLink



- Wall mounted ladder bracket, fixes directly onto wall.
- In addition the LadderLink bracket has two tie off points to aid in securing the ladder in position.
- Secure with a minimum of four appropriate fixings, see manual.

| Product Code | Description | Material | Qty | Weight (kg) |
|--------------|--------------------------------|----------|-----|-------------|
| LADFX003 | Fixed LadderLink: Wall Mounted | *MGA | 1 | 2.203 |

ENTRY ACCESS



Certification Labels



- Certification Labels supplied in packet of 100.
- Labels contain serial numbers for use in computer tracking systems.
- Supplied with permanent marker.
- To be used for marking each individual anchor point for certification purposes.
- Made from High Density Polyethylene.
- Protective clear cover to prevent removal of text from weather or tampering.

| Product Code | Description | Qty | Weight (kg) |
|--------------|----------------------|-----|-------------|
| LABEL001 | Certification Labels | 1 | 0.157 |

Warning Entry Compliance Sign



- Essential entry point information for safety system.
- Notes installer information, safe use and inspection details.
- Size 300mm x 120mm x 1mm.

| Product Code | Description | Qty | Weight (kg) |
|--------------|-------------------------------|-----|-------------|
| WARN001 | Warning Compliance Entry Sign | 1 | 0.080 |



First Man Up Strop



- Used as first man up system; reduces the amount of entry access anchors required.
- Quicklink must be attached to a load rated anchor.
- Attachment end should be secured with a strop hook when not in use to ensure it can be accessed from a safe area for next use.
- UV plastic coated to prevent wear on roof sheeting.
- 15kN Rated.

| Product Code | Description | Material | Qty | Weight (kg) |
|---|-------------------------|-----------|-----|-------------|
| STROP001 | 1m First man up Strop | 316SS/PVC | 1 | 0.353 |
| STROP001.5 | 1.5m First man up Strop | 316SS/PVC | 1 | 0.440 |
| STROP002 | 2m First man up Strop | 316SS/PVC | 1 | 0.531 |
| STROP002.5 | 2.5m First man up Strop | 316SS/PVC | 1 | 0.619 |
| STROP003 | 3m First man up Strop | 316SS/PVC | 1 | 0.669 |
| STROP003.5 | 3.5m First man up Strop | 316SS/PVC | 1 | 0.814 |
| STROP004 | 4m First man up Strop | 316SS/PVC | 1 | 0.886 |
| Contact SafetyLink for site specific required lengths | | | | |

Strop Hook with Sign



- NOT INCLUDED with strops, order separately.
- Secures the attachment point of the strop when not in use, ensuring the wind cannot blow the strop away from the access point.
- Please note this is not a load rated anchor, only to be used as an accessory to secure the strop.
- Hook can be secured with 2 screws or 2 rivets.
- Sprung Gate for easy and secure use.

| Product Code | Description | Material | Qty | Weight (kg) |
|----------------|------------------------------|----------|-----|-------------|
| Strophaok+Sign | Strop Hook with Warning Sign | 316SS | 1 | 0.048 |

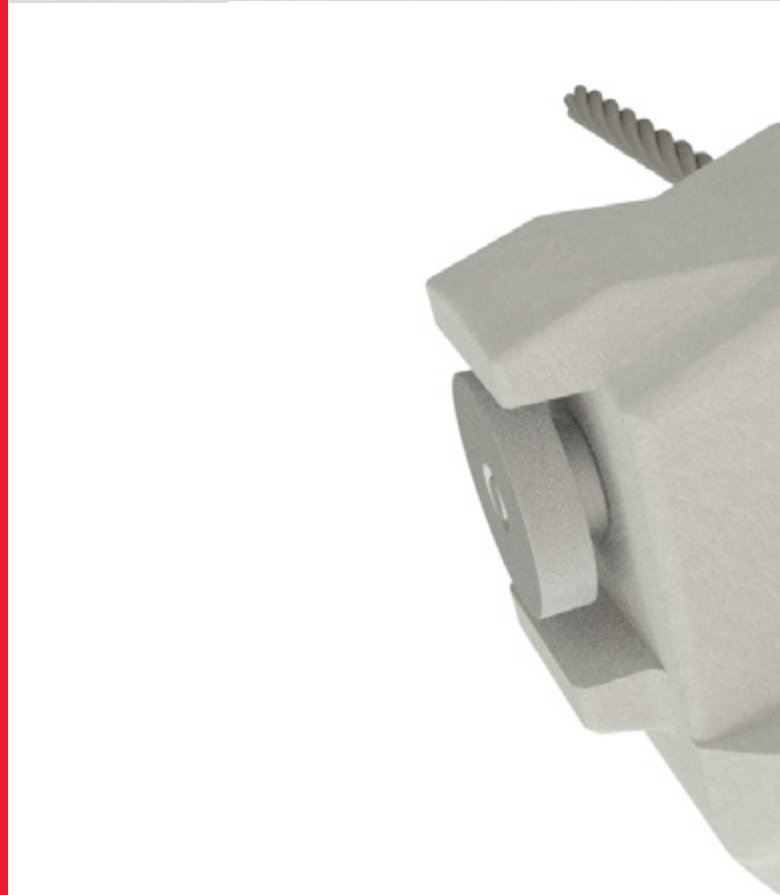
‘Complete Solutions’

TOOLS

Riveting tools for installing SafetyLink's surface mounted roof anchors.

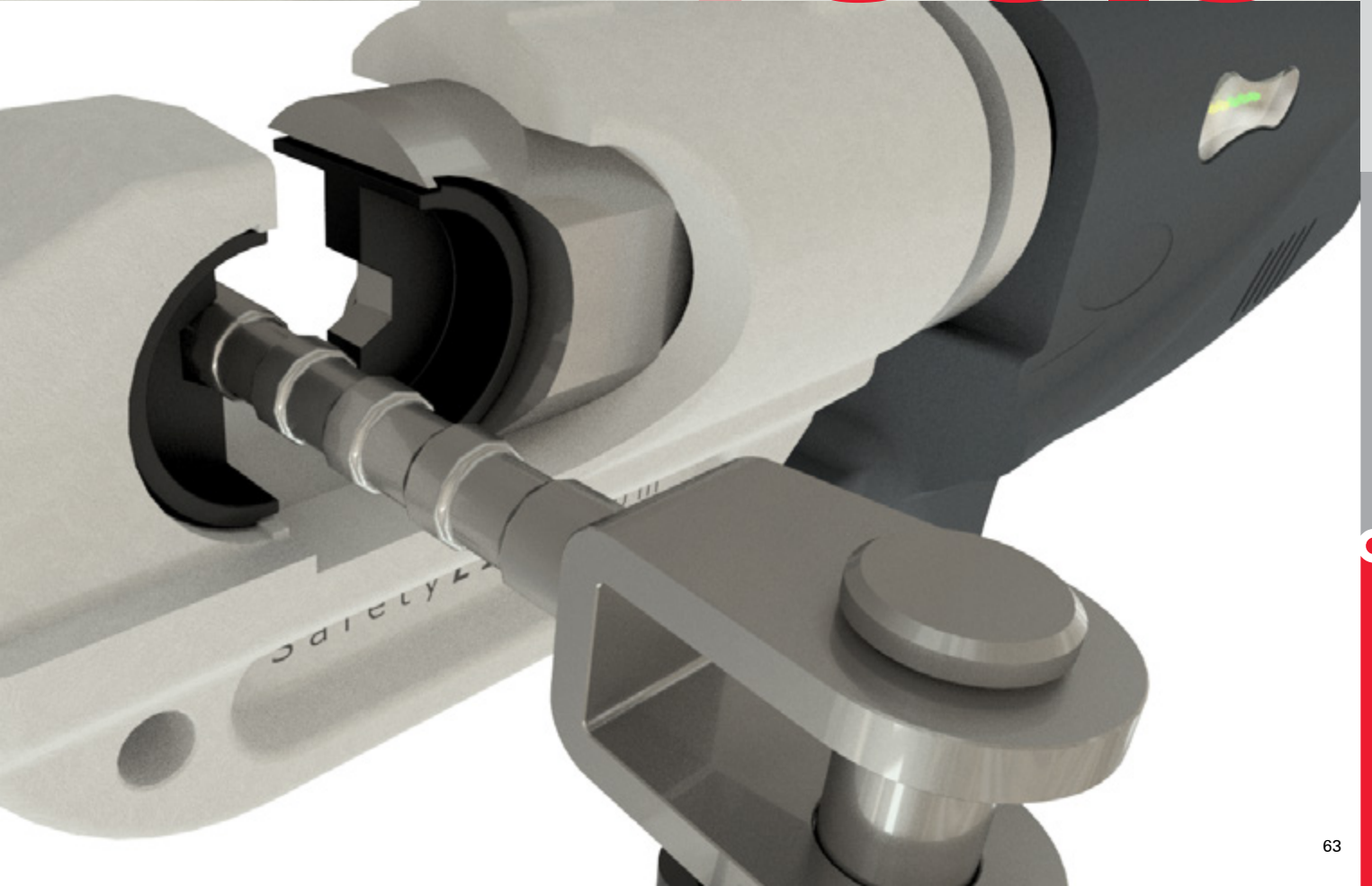
Crimping tools for crimping tensioners and terminations to the cable on lifeline systems.

Hydrajaws tester for testing concrete mounted anchors.





Tools



RIVET TOOLS



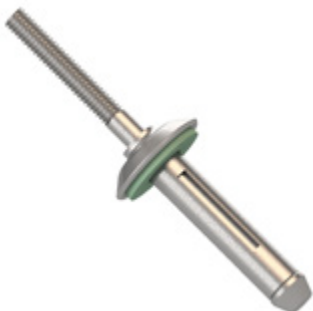
Rivet Tool Side Ejector Nose Piece



- Nose Piece: 9/32BT Side eject nose assembly and adaptor.
- Eliminate swarf contamination within the tool.
- Prevents possible damage to the nose/jaw assembly and saves time in cleaning.
- Saves battery power with larger stroke.

| Product Code | Description | Qty | Weight (kg) |
|--------------|---|-----|-------------|
| GESIPA001.10 | 9/32BT Side eject nose assembly & adaptor | 1 | 0.235 |

Rivet - 8mm



- Bulbtite Rivets
- Drill Size 7.8-8.2mm
- Length 7.7 x 27.7mm
- Grip Range 1.0-9.5mm

| Product Code | Description | Material | Qty | Weight (kg) |
|-----------------|---------------------------------|----------|-----|-------------|
| RIVET_8mm(27.7) | 8mm Bulbtite Rivet (Green Seal) | Alum | 1 | 0.007 |

Gesipa Powerbird BT



- Includes extra battery with case.
- Used in conjunction with bulbtite rivets, (Drill Size 7.8-8.2mm, 27.7mm length, 1.0-9.5mm grip range).
- Constant forward and backward speed of the jaw assembly.
- Immediate repositioning of the jaw assembly after completion of the setting process saves energy and increases setting frequency.
- Electronic control, no mechanical switching.
- Electronic temperature and overloading monitoring.
- High efficiency through ball screw drive with low energy dispersion.
- 3 piece anti-wear jaws.
- Nosepieces: - 3/16", 5mm, 6mm, 1/4", extended nosepieces available.
- Compact, shockproof plastic housing.
- Disposal of spent mandrel through action of gravity, either forwards through the nosepiece or backwards into the spent mandrel container.
- Includes charger, case, battery and multiple nose pieces.

| Product Code | Description | Qty | Weight (kg) |
|--------------|---|-----|-------------|
| GESIPA001.01 | Gesipa Powerbird BT Cordless Rivet Tool | 1 | 5.073 |

Gesipa Tool HN 2-BT



- Gesipa Hand Rivet Tool (HN 2-BT)
- Used in conjunction with 8mm bulbtite rivets
- Drill size 7.8-8.2mm
- Length 27.7mm
- Grip Range 1.0-9.5mm

Technical Data:

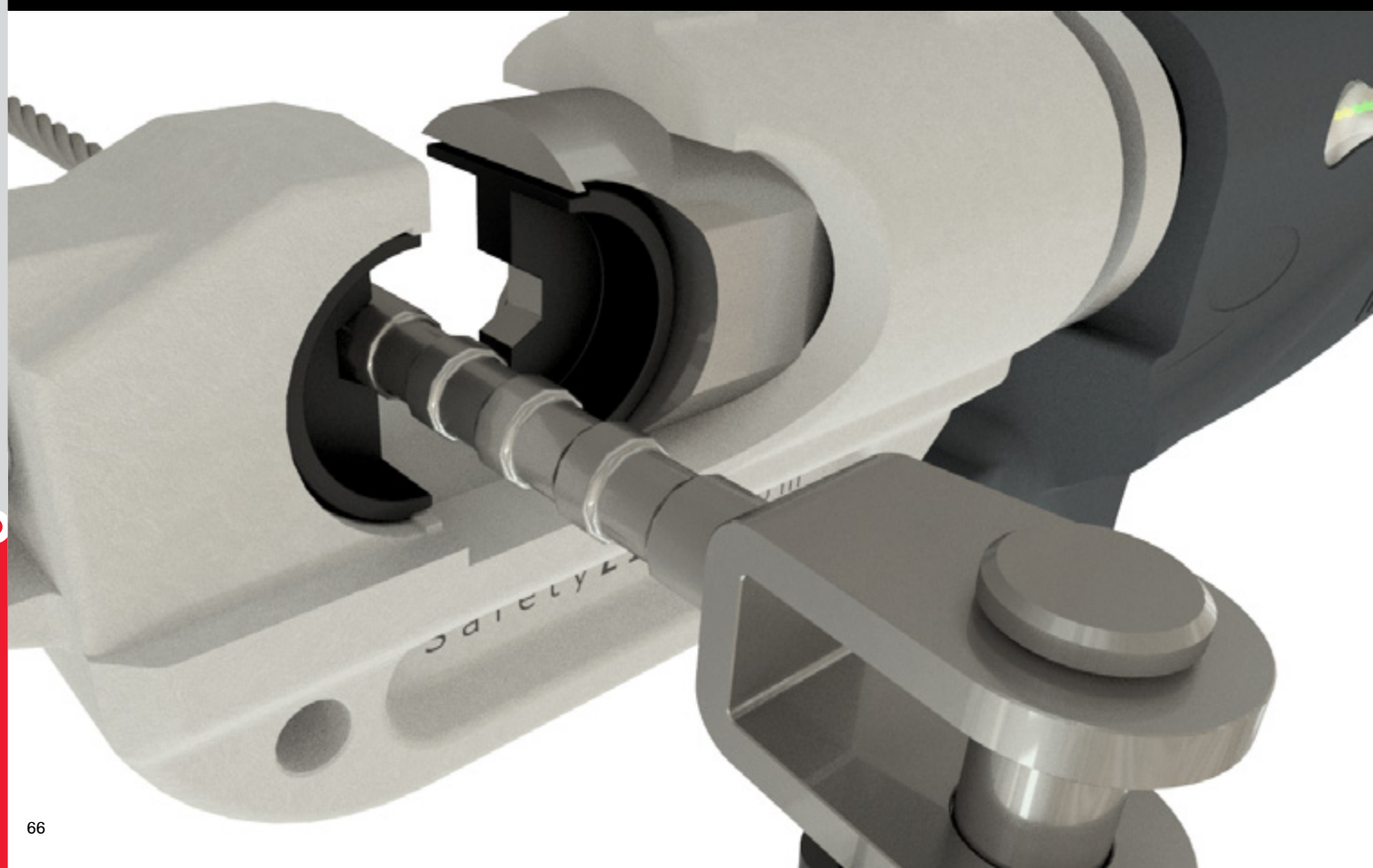
- Stroke: 10mm
- Length: 577mm

| Product Code | Description | Qty | Weight (kg) |
|--------------|----------------------------------|-----|-------------|
| GESIPA001.02 | Gesipa Hand Rivet Tool (HN 2-BT) | 1 | 2.071 |

CRIMPING TOOL



The battery powered Crimping Tool is used to crimp the Tensioner and Termination to the horizontal and vertical lifelines. Please see installation manual for maintenance instructions to look after your new tool.



Crimping Tool



- Battery powered Crimping Tool.
- Able to rotate for different working positions.
- Battery capacity indicator (LED).
- Includes crimping tool, carry case, charger and two batteries.
- Output force: 12 TONNE.
- Motor: 14.4 VDC.
- C Jaw opening: 42mm.
- EXTRA DIE REQUIRED TO CRIMP 8MM CABLE - Product code: STAT.CRIMP001 (use with STAT.TENSR003, STAT.TENSR005 & STAT.TERMN003).

| Product Code | Description | Qty | Weight (kg) |
|---------------|-------------------------------|-----|-------------|
| STAT.CRIMP009 | Battery powered Crimping Tool | 1 | 17 |

Crimping Tool Die



- Die for battery powered crimping tool STAT.CRIMP009.
- Required for 8mm Cable, for use with STAT.TENSR003 , STAT.TENSR005 and STAT.TERMN003.
- Size A/F10.83.

| Product Code | Description | Qty | Weight (kg) |
|---------------|-------------------|-----|-------------|
| STAT.CRIMP001 | Crimping Tool Die | 1 | 0.194 |

Battery for Crimping Tool



- Extra Battery for Crimping Tool

| Product Code | Description | Qty | Weight (kg) |
|------------------|---------------------------------|-----|-------------|
| STAT.CRIMP009.04 | Extra Battery for Crimping Tool | 1 | 0.849 |

HYDRAJAWS PULL TESTER



- To comply with recognised Industry Standards each Concrete Insert must be tested after installation and at every recertification inspection.
- Ensure you wait the recommended curing time as specified by the chemical anchor instructions.
- The pull test can be done using a 16mm threaded eyebolt. Test consists of ultimate pull out force proof loading to 50% of design purpose of anchorage.

Model 2000 Medium Duty Tester Kits

DELUXE Tester Kit

- Comprises of a 50mm stroke tester plus:
- Choice of gauge scope from range of 5kN, 10kN, 15kN, 20kN or 25kN.
 - 150 load spreading bridge with threaded legs,
 - 6 threaded & 6 slotted button adaptors - M4, M5, M6, M8, M10, M12,
 - Bolt tester adaptor with M12 locking adaptor,
 - 3mm ball driver, mounting screws and allen keys,



DELUXE MASTER Tester Kit

- Comprises of DELUXE kit plus:
- Choice of 2 detachable gauges from range of 5kN, 10kN, 15kN, 20kN or 25kN with quick release couplers,
 - Oil replenisher bottle with quick release coupler & Piston key.



Deluxe and Deluxe Master 'PLUS' Tester Kits

- Comprises of standard DELUXE and standard DELUXE MASTER equipment plus:

- 50mm and 75mm solid Hex extension Leg sets
- M12 ringbolt adapter clevis
- Four threaded stud adaptors (M10, M12, M16, M20)



Hydrajaws Pull Tester - MODEL 2000



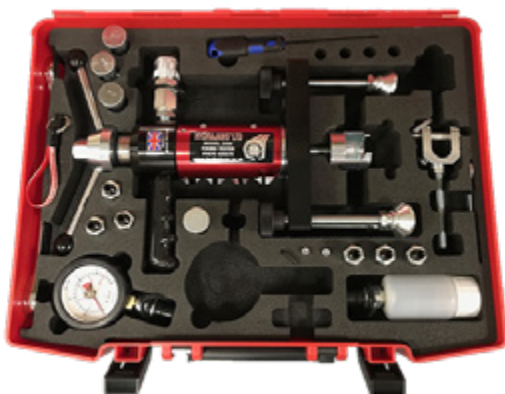
- Model 2000 Medium Duty Fixing Testers - enabling engineers to confirm the holding power of anchors in most construction materials.
- The Model 2000 Eye Bolt Kit comprises the necessary accessories to enable the pull test of common eye bolt and ring bolt fixings.

KIT CONTENTS:

- 1. Model 2000 medium duty tester
- 2. 50mm Stroke tester body
- 3. 15kN Gauge
- 4. 150 Load spreading bridge with level bubbles
- 5. 75mm Hex legs with 25mm leg extension adjustment
- 6. Swivel feet
- 7. M12 Locking adaptor
- 8. M12 Ringbolt adaptor clevis
- 9. Operating nut
- 10. 3mm Ball driver
- 11. Allan key
- 12. Spare screws
- 13. Carry case with filler
- 14. Operating instructions
- 15. Calibration certificate

| Product Code | Description | Qty | Weight (kg) |
|--------------|----------------------------------|-----|-------------|
| TESTER001 | Hydrajaws Pull Tester Model 2000 | 1 | 8.000 |

Hydrajaws Pull Tester - MODEL 2000 DELUXE PLUS



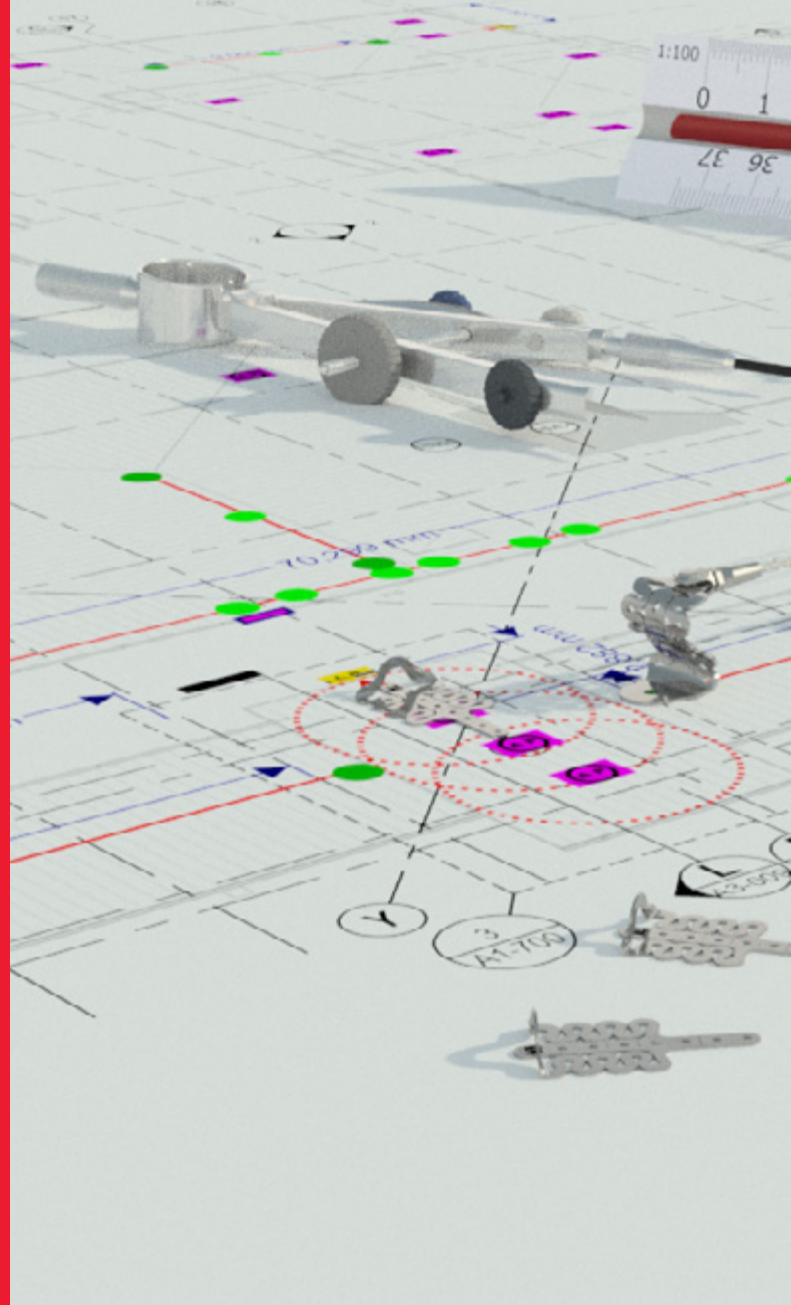
- The Model 2000 Deluxe 'PLUS' Kit is our general purpose kit and features a gauge of choice and a comprehensive range of accessories to cover a wide range of pull test situations.
- Fixings and anchors from M4 to M20 can be tested as standard, while the variety of adaptors enable a wide range of other types and sizes to be tested including: - all industry specific Scaffold fixings including ringbolts and drop in anchors. - any eyebolt and ringbolt across multiple applications.
- Other accessories include 50mm and 75mm Hex Extension Legs should there be a requirement to extend the gap between the tester jaw and the fixings.

Important:

- An important point regarding specifying a 30kN gauge is that Hydrajaws insists that 75mm hex extension legs are purchased with a 'Deluxe' type tester kit and that these are installed on the load spreading bridge when loads exceed 25kN to reinforce the standard threaded legs. The new 'Deluxe PLUS' and 'Deluxe Master PLUS' tester kits feature these legs as standard.

| Product Code | Description | Qty |
|--------------|------------------------------------|-----|
| TESTER006 | with 1 Analogue gauge (0-30kN) | 1 |
| TESTER007 | with 1 Digital gauge (0-30kN) | 1 |
| TESTER008 | with 1 Bluetooth Digital* (0-30kN) | 1 |

‘Innovative Fall Protection’



© 2018, SafetyLink Pty Ltd, Australia.

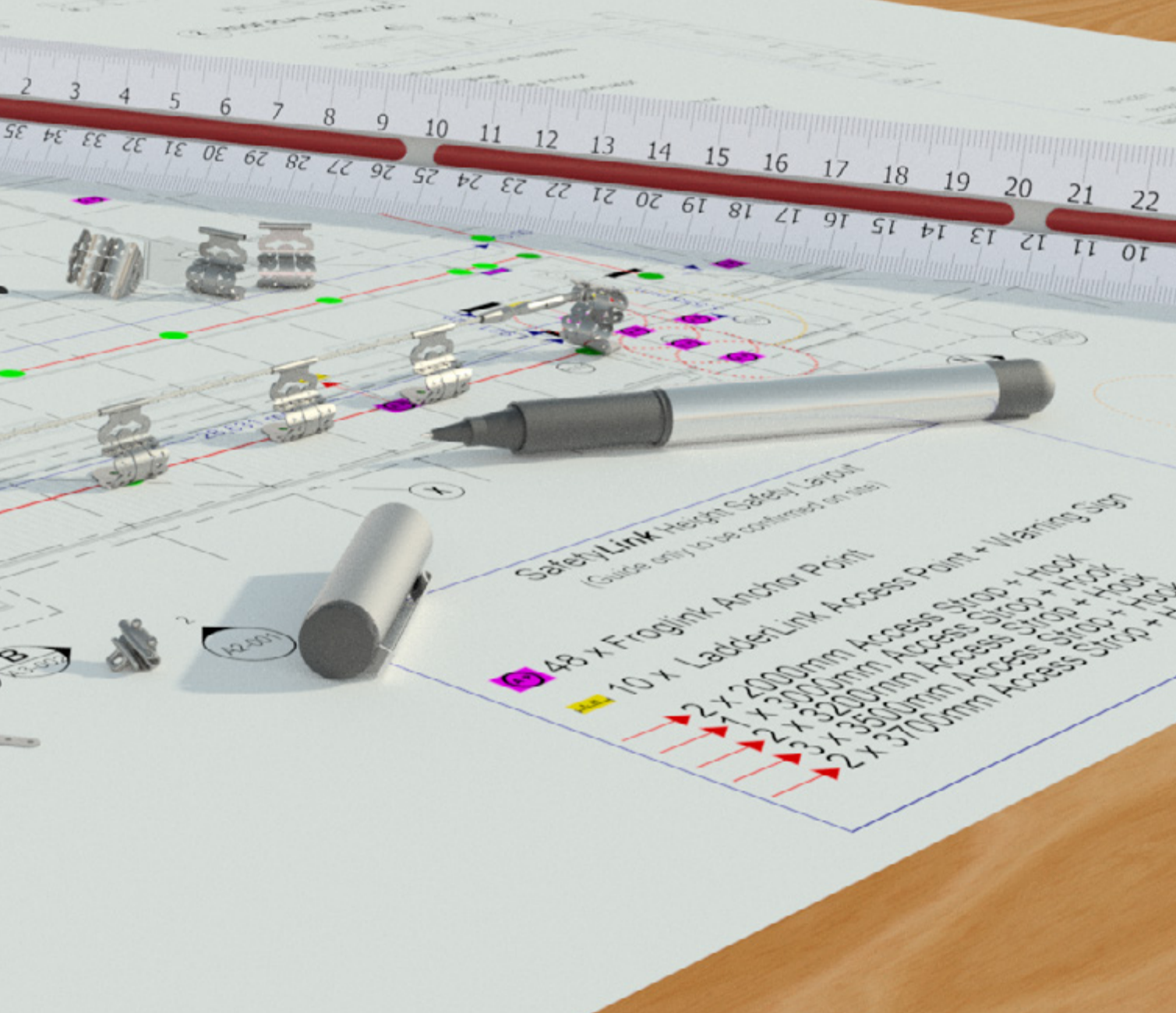
Patents : SafetyLink Pty Ltd has a multitude of patents, patents pending, design applications, trademarks and copyrighted documents both lodged and issued.

Should you wish to know the progress of our intellectual property on a specific product please email us on info@safetylink.com and quote the product code.

Version 2: 05/19



SafetyLink Terms and Conditions



EXPERT FALL PROTECTION PLANNING

SafetyLink's design and planning team are here to help work out the positioning of your fall protection system. Ensuring all areas of your roof are accessed safely.

Things to consider when planning your roof layout:

- Are all areas of your roof protected, allowing complete access when working at heights?
- Are you protected from the ground up, allowing complete access to your roof?
- Detailed comprehensive documentation provided.
- Contact our design team at info@safetylink.com and we can plan your fall arrest system for you.

Notes

[illegible]



SafetyLink®

*Innovative
Fall Protection*

3/16 Huntingdale Drive,
Thornton NSW 2322 Australia
E: info@safetylink.com

1300 789 545 | +61 (0)2 4964 1068

www.safetylink.com